

Established
1973

LINEWAITERS'

GAZETTE

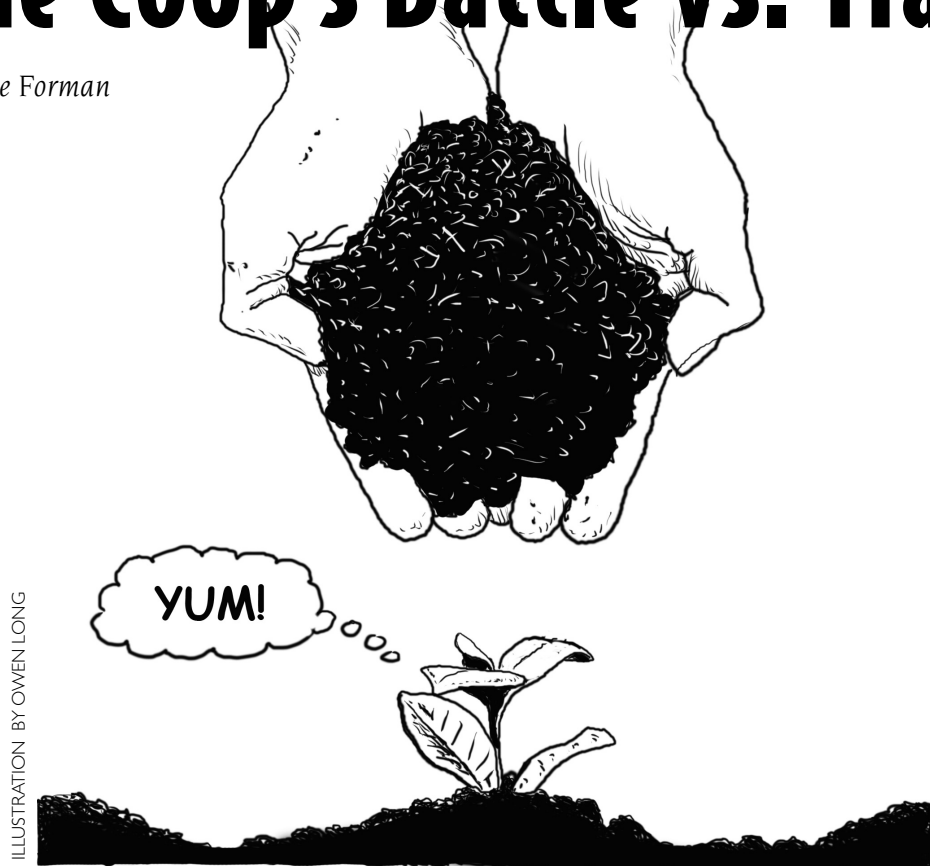


Volume BB, Number 18

August 30, 2007

Waste Not: The Coop's Battle vs. Trash

By Gayle Forman



Coop members tend to be a fastidious lot when it comes to minimizing their garbage, as witnessed by their shopping habits. They pack their produce in reusable mesh bags, their bulk items in battered Ziplocs and load their groceries in canvas totes or cardboard boxes, which many in turn recycle. What many members may not realize is the lengths to which the Coop itself goes not just to recycle its waste, but also to create less of it in the first place.

"Because we sell food, we invariably create garbage," says Joe Holtz, general manager of the Coop. "But per ton of food, we create a lot less garbage than traditional stores. Partly because we don't consider fruit and vegetables trash."

Finding a second life for that wilting bunch of kale or those bananas just starting to go brown is the front line of the Coop's waste-reduction strategy. Produce aisle workers are given specific guidelines to determine whether fruits and veggies should be shelved, donated or composted. If produce is no longer fit to sell (because, for instance, it's wilting), but is still in good enough shape that you'd eat it at home if it were in your fridge, it gets donated to one of many soup kitchens the Coop works with. If it's too far gone, it's composted.

Receiving Coordinator Hilton Horwitz is responsible for coordinating the donation to food pantries. "I hate throwing away food," Horwitz says. And for the most part, he doesn't. Horwitz estimates that on average, the Coop

gives about 160 pounds of produce a day, as well as meat and dairy products, to local soup kitchens. "We try to give locally to soup kitchens at CHIPS and Baltic Street, as well as to larger organizations like City Harvest."

The impact of the Coop's donation cannot be underestimated. "We couldn't exist without it," says Yvette Puerta, coordinator of the Baltic Street Food Coop. "We're a little organization compared to City Harvest, and it's hard to get the grocery stores in our community to donate to us."

When the food isn't fit for human consumption, it goes back to the land—most notably as compost for the Garden of Union, a community garden on Union Street. In the early 1980s, when both the Coop and the garden were in their infancy, Coop members suggested that inedible produce be donated to the garden, and over the years, the relationship has become so formalized that there are currently several work-slots for composters. Produce is either packed

CONTINUED ON PAGE 7



PHOTOS BY HAZEL HANKIN

The Marshall Family.

Coop Members Spearhead a Cohousing Project in Brooklyn

By Johannah Rodgers

Yearning for more of a community feeling and a stable, friendly environment to raise their young son, Coop members Alex Marshall and Kristi Barlow began thinking about developing a cohousing project in Brooklyn several years ago. Marshall and Barlow held their first organizational meeting in May and now have six formal members and about two dozen additional households interested.

The concept of cohousing, which is defined as a planned community owned and managed by residents who live in

private residences designed to facilitate community activities and resource sharing, was developed in Denmark in the late 1960s. Since then hundreds of cohousing communities have been built in the United States and in Europe.

Though it emerged with experiments in communal living in the 1960s and 1970s, cohousing is quite distinct from these models in its practical implementation. Designed both structurally and socially to re-create the conditions of small village living, cohousing communities, according to Kathryn McCamant, a coauthor of *Cohousing*:

CONTINUED ON PAGE 2

Next General Meeting on September 25

The General Meeting of the Park Slope Food Coop is held on the last Tuesday of each month.* The next General Meeting will be Tuesday, September 25, 7:00 p.m. at the Congregation Beth Elohim Temple House (Garfield Temple), 274 Garfield Pl.

The agenda will be available as a flyer in the entryway of the Coop on Wednesday, September 5. For more information about the GM and about Coop governance, please see the center of this issue.

* Exceptions for November and December will be posted.

IN THIS ISSUE

New Workslot: The Entrance Chair	3
Coop Hours, Puzzle	4
Coop Calendar, Governance Information, Mission Statement	5
Community Calendar	6
Letters to the Editor	7
Classified Ads	8

Coop Event Highlights

The long-awaited new checkout system is coming this fall!

So there will be no events in the meeting room during September and possibly part of October to accommodate training sessions on the new system.

**We are updating our list of members
who are ASL interpreters.
If you can be available to
interpret meetings, orientations, etc.
for FTOP or make-up credit,
please contact
Ellen or Karen in the Coop office.**

Or you can join in any time during a tour.

For more information contact Alex Marshall by phone at 212-229-9392, or by e-mail at brooklyncohousing@yahoo.com. ■

We are seeking an applicant pool that reflects the diversity of the Coop's membership.

New Workslot: The Entrance Chair

By Kira Sexton

When I was a college student in Madison, Wisconsin, I belonged to several food coops, including the Mifflin Street Coop, which was notorious for cosponsoring a street fair that sold very potent hash brownies. Membership in these coops involved little more than either cutting cheese on a Wednesday afternoon—or any Wednesday afternoon—or paying slightly more at check-out. I chose the latter option, as most everyone did. So the first time I visited the Park Slope Food Coop, imagine my surprise when I was immediately flagged down as I leisurely sauntered inside, clueless, no membership ID card in hand.

“Wait!” someone yelled. “Where’s your card?” And then another voice repeated insistently, “She doesn’t have a card. She just doesn’t have one.”

I ran out the door, and it was nine years before I ventured back inside. Of course, with an aunt who joined the Coop in 1983 and assorted friends sorting spices in food processing for over a decade, you would think someone would have clued in poor obtuse me. Why didn’t anyone tell me that I needed to go to initiation, that I needed to invest money in the Coop, that I needed an ID card and a workslot? But instead, this task fell to the already overtaxed folks of the shopping squad, the people who also man the front desk, telling harried mothers that they have been suspended and notifying disbelieving roommates that someone in their household is on work alert. They are also responsible for signing in members and their visitors, accepting and processing recycling, facilitating product refunds and keeping nonmembers from entering and shopping for food that they will then not be allowed to later pay for. Add to the mix a spate of pickpocketing around holiday time, and it’s easy to understand why some shopping squad workers felt they needed an additional pair of hands—and eyes—on their squad.

And thus, the entrance–chair position was born, in part to ease the bottleneck of people swiping and entering, and partly to make the shopping experience a little more secure for everyone.

The job is the brainchild of Amina Ali, who has worked a Sunday shift at the front desk for almost six years. Ali first brought up the entrance–chair position as an item for discussion at January’s General Meeting. “When my squad tried a third person sitting in the chair just to watch traffic a



Carla Drysdale, front chair Coop staff

few times, this job worked beautifully,” Ali recounted in an e-mail message. The position was then voted on in March. “It was pretty hotly debated when it came up for a vote, I think because people have a bad connotation of the word *security*.”

The first time I noticed the entrance chair it was empty. The second time, on a recent Friday afternoon, someone was sitting in it. He was using it, however, more as a *seat* than as an *entrance chair*. Coop members do seem to have mixed feelings about the entrance–chair position, including the shopping squad members whose lives are made easier by its presence. Erin Cox, co-squad leader of a Sunday shopping squad (3:30 D) shift, struggled to find the right words to describe how she believes fellow Coop members might see the new work position. “Is it necessary? Or are there just extra people who need a workslot? If people are aware that a lot of people are abusing the Coop [entrance] system, they would probably be more accepting of it.”

Cox also noticed another difficulty of sitting in the entrance chair, implying that it helps to have a laidback personality. “The job has the potential to be high-handed, too inquisitive. Of course people come inside and they go upstairs and then come downstairs and they don’t want to be asked three times ‘Did you swipe?’”

Jessica Stein, a resident of Flatbush who has belonged to the Coop for four years, was working in the big chair during

a makeup shift on a recent sunny afternoon. What exactly does the job entail? “Making sure that everyone swipes, that they don’t exit through the entrance. And telling them that orientation is on the second floor.” Stein allowed that she wouldn’t do the entry chair again if something else was available. “I’m kind of in the way, sitting here. It also makes you suspicious.” She pointed to someone walking past her. “I mean, that guy came in to wash his hands. Yeah. Sure.”

Ellen Bunin, Cox’s co-squad leader on the shopping squad, agrees that the entrance–chair position helps with security, as long as the person in the chair is alert. Samir Shoukralla, a Coop member for approximately one month, likes the shift, the first one he has worked at the Coop. Any negatives? “There is not enough room,” he said, gesturing to the small space between his chair and the entrance desk, “but people understand.”

Amina Ali concedes that discussion over the entrance chair is not over yet. “I am glad the chair is there and that people can utilize the workslot as they see fit.” She hopes that Coop members keep in mind that “our Coop’s safety is everyone’s job.” When asked if she has ever had any trouble finding someone to sit in the entrance chair, Ellen Bunin chuckled. “No. It’s an easy job.” Shopping squad member Delores London added jokingly about her coworker Shoukralla, “Hey! He’s the Coop bouncer! He could get hurt!” ■

Monthly on the...

Second Saturday • Sep 8 • noon–2:00 p.m.

Third Thursday • Sep 20 • 7:00–9:00 p.m.

Last Sunday • Sep 30 • 10:00 a.m.–noon

On the sidewalk
in front of the receiving area
at the Park Slope Food Coop.

PLASTICS

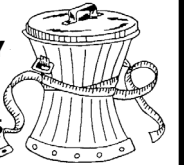
What plastics do we accept?

- #1 and #2 non-bottle shaped containers and #1 and #2 labeled lids. Mouths of containers must be equal width or wider than the body of the container.
- All #4 plastic and #4 labeled lids.
- #5 plastic tubs, cups & specifically marked lids and caps (discard any with paper labels).
- Plastic film, such as shopping and dry cleaning bags, etc. Okay if not labeled.

ALL PLASTIC MUST BE COMPLETELY CLEAN AND DRY

We close up promptly.

Last drop offs will be accepted 10 minutes prior to our end time to allow for sorting.



LOVE “FAIR TRADE”?

JOIN THE FAIR TRADE COMMITTEE!

The Fair Trade Committee works to raise awareness and sales of Fair Trade products both within the coop and the city at large.

We organize tablings, hold Fair Trade product tastings, host speakers, and oversee the Coop’s Fair Trade labeling system.

We have several open work slots and are looking for members who:

- are familiar with Fair Trade
- are interested in doing public education
- have interesting and creative ideas for promoting Fair Trade.

We are accepting applications until September 30, 2007 and will be doing in-person interviews during the first and second week of October.

If you are interested in joining this committee, please send an email requesting an application to Freya Riel at freya.riel@gmail.com

Thanks for your interest!

Fair Trade Committee
Park Slope Food Coop



New Coop chair

COOP HOURS

Office Hours:

Monday through Thursday
8:00 a.m. to 8:30 p.m.
Friday & Saturday
8:00 a.m. to 5:00 p.m.

Shopping Hours:

Monday–Friday
8:00 a.m. to 10:00* p.m.
Saturday
6:00 a.m. to 10:00* p.m.
Sunday
6:00 a.m. to 7:30* p.m.

*Shoppers must be on a checkout line
15 minutes after closing time.

Childcare Hours:

Monday through Sunday
8:00 a.m. to 8:45 p.m.

Telephone:

718-622-0560

Web address:

www.foodcoop.com

LINEWAITERS' GAZETTE

The *Linewaiters' Gazette* is published biweekly by the Park Slope Food Coop, Inc., 782 Union Street, Brooklyn, New York 11215.

Opinions expressed here may be solely the views of the writer. The *Gazette* will not knowingly publish articles that are racist, sexist, or otherwise discriminatory.

The *Gazette* welcomes Coop-related articles, and letters from members.

SUBMISSION GUIDELINES

All submissions MUST include author's name and phone number and conform to the following guidelines. Editors will reject letters and articles that are illegible or too long. Submission deadlines appear in the Coop Calendar opposite.

Letters: Maximum 500 words. All letters will be printed if they conform to the guidelines above. The Anonymity and Fairness policies appear on the letters page in most issues.

Voluntary Articles: Maximum 750 words.

Submissions on Paper: Typed or very legibly handwritten and placed in the wallpocket labeled "Editor" on the second floor at the base of the ramp.

Submissions on Disk & by Email: We welcome digital submissions. Drop disks in the wallpocket described above. The email address for submissions is GazetteSubmissions@psfc.coop. Receipt of your submissions will be acknowledged on the deadline day.

Classified & Display Ads: Ads may only be placed by and on behalf of Coop members. Classified ads are prepaid at \$15 per insertion, business card ads at \$30. (Ads in the "Merchandise–Non-commercial" category are free.) All ads must be written on a submission form (available in a wallpocket on the first floor near the elevator). Classified ads may be up to 315 characters and spaces. Display ads must be camera-ready and business card size (2"x3.5").

Recipes: We welcome original recipes from members. Recipes must be signed by the creator.

Subscriptions: The *Gazette* is available free to members in the store. Subscriptions are available by mail at \$23 per year to cover the cost of postage (at First Class rates because our volume is low).

Printed by: Prompt Printing Press, Camden, NJ.



Puzzle Corner

1	2	3	4		5	6	7	8	9		10	11	12	13
14					15						16			
17					18						19			
20				21			22			23				
24							25							
			26		27	28			29		30	31	32	
33	34	35		36			37	38		39				
40			41		42				43		44			
45				46		47				48		49		
50								51			52			
			53		54	55	56			57		58	59	60
			61	62						63				
64					65				66		67			
68					69						70			
71					72						73			

Puzzle by Stuart Marquis

8/30/2007

DOWN

1 Tintin's dog

2 Deb's headdress

3 Perfume from rose petals

4 Inhabit

5 Corned beef dish

6 A big bird down under

7 Clear an IOU, say

8 Portly, and then some

9 Drug cops

10 Forks or chopsticks

11 Germ

12 Notable elephant features

13 Sere

21 Old Russian

23 Oily fishes in Unagi rolls

27 Chip Shop fish

28 Not a piece of cake

30 Butterfly's less flashy cou

31 Fencing tool

32 Places to shoot

33 Wanes

34 Jack Sprat's meals

35 Tableland

37 Knight title

38 Tropical hardwood

41 Tofu attribute

43 One of five in Yahtzee

46 Perilous paint material

48 Cashier's call

52 Melodic words

54 Even more undone

55 Cooperative kind of soup fable

56 Drives, out on the range

58 Around here

59 Swelling

60 Slovenly

61 Spice from a nutmeg see

62 God of war

63 Fume

64 Ram

66 Boy's name, in song

ACROSS

1 White dwarf and others

5 Avian great blue

10 Like clothes at a stoop sale

14 Nick at ____

15 Common protozoa

16 Rip

17 Horse snack

18 Apartment handyman

19 Spooky

20 Spectral spirit

22 Rises

24 Suburban green spaces

25 Affirmations

26 Per

29 Mojito fruits

33 Disease-plagued tree

36 Light or dark at Tea Lounge

39 Coop's 'hood

40 Complaint

42 Like apricots in aisle 2

44 Editor's reconsideration

45 Proprietor of Fawlty Towers

47 Brain _____

49 Bucks and stags, e.g.

50 Entrap

51 Boat's bottom

53 Bog

57 Wood, scientifically

61 Directive

63 Took a big step

64 Undone

65 Least

67 Treats a twisted ankle

68 Tops

69 Put on or take in

70 Live videos on the web

71 Soldier's chow

72 Stitch up again

73 Dispatch, violently

For answers, see page 6.

This issue's puzzle author:

Stuart Marquis

What's in.

what's out.

What's up.

www.psfc.blogspot.com

www.foodcoop.com

Looking for something new?

Check out the Coop's products blog.

The place to go for the latest information on our current product inventory.

You can connect to the blog via the Coop's website

www.foodcoop.com

This Issue Prepared By:

- Coordinating Editors:

Stephanie Golden
Erik Lewis
- Editors (development):

Dan Jacobson
Michael O'Keeffe
- Reporters:

David Boyer
Masha Hamilton
Johannah Rodgers
- Art Director (development):

Alfredo Zelcer
- Illustrators:

Susan Greenstein
Owen Long
- Photographers:

Hazel Hankin
Ann Rosen
- Traffic Manager:

Monona Yin
- Classified Ads Prep:

Heather Cottrell
- Text Converters:

Peter Benton
Diana Quick
- Proofreader:

Margaret Benton
- Thumbnails:

Barbara Jungwirth
- Preproduction:

Yan Kong
- Photoshop:

Bill Kontzias
- Art Director (production):

Lynn Cole-Walker
- Desktop Publishing:

Leonard Henderson
Tricia Stapleton
Susan Louie
- Editor (production):

Michele Mitchell
- Final Proofreader:

Isabelle Sulek
- Post Production:

Becky Cassidy
- Index:

Len Neufeld



No Shopping on Monday, October 1st

Why?


Installation of the

New Debit Card Checkout System.

Shopping will resume at 8:00 a.m. on

Tuesday, October 2.

COOP CALENDAR



New Member Orientations

Monday & Wednesday evenings: . . . 7:30 p.m.
Wednesday mornings: 10:00 a.m.
Sunday afternoons: 4:00 p.m.

Be sure to be here promptly—or early—as we begin on time! The orientation takes about two hours. Please don't bring small children.

General Meeting

TUE, SEP 4
AGENDA SUBMISSIONS: 8:00 p.m.

Submissions will be considered for the Sep. 25 General Meeting.

TUE, SEP 25
GENERAL MEETING: 7:00 p.m.

The agenda will appear in the next *Gazette* and as a flyer in the entryway on Wednesday, Sep 5.

Gazette Deadlines

LETTERS & VOLUNTARY ARTICLES:

Sep 13 issue: 7:00 p.m., Mon, Sep 3
Sept 27 issue 7:00 p.m., Mon. Sep 17

CLASSIFIED ADS DEADLINE:

Sep 13 issue: 7:00 p.m., Wed, Sep 5
Sept 27 issue 7:00 p.m., Wed. Sep 19

The Coop on Cable TV

Inside the Park Slope Food Coop

FRIDAYS 2:30 p.m. with a replay at 10:30 p.m.
Channels: 56 (TimeWarner), 69 (CableVision).

ALL ABOUT THE GENERAL MEETING

Our Governing Structure

From our inception in 1973 to the present, the open monthly General Meetings have been at the center of the Coop's decision-making process. Since the Coop incorporated in 1977, we have been legally required to have a Board of Directors. The Coop continued the tradition of General Meetings by requiring the Board to have open meetings and to receive the advice of the members at General Meetings. The Board of Directors, which is required to act legally and responsibly, has approved almost every General Meeting decision at the end of every General Meeting. Board members are elected at the Annual Meeting in June. Copies of the Coop's bylaws are available at the Coop Community Corner and at every General Meeting.

Next Meeting: Tuesday, September 25, 7:00 p.m.

The General Meeting is held on the last Tuesday of each month.

Location

The temple house of Congregation Beth Elohim (Garfield Temple), 274 Garfield Place.

How to Place an Item on the Agenda

If you have something you'd like discussed at a General Meeting, please complete a submission form for the Agenda Committee. Forms are available in the rack near the Coop Community Corner bulletin board and at General Meetings. Instructions and helpful information on how to submit an item appear on the submission form. The Agenda Committee meets on the first Tuesday of each month to plan the agenda for the GM held on the last Tuesday of the month. If you have a question, please call Ellen Weinstat in the office.

Meeting Format

Warm Up (7:00 p.m.)

- Meet the Coordinators
- Enjoy some Coop snacks
- Submit Open Forum items
- Explore meeting literature

Open Forum (7:15 p.m.)

Open Forum is a time for members to bring brief items to the General Meeting. If an item is more than brief, it can be submitted to the Agenda Committee as an item for a future GM.

Reports (7:30 p.m.)

- Financial Report
- Coordinators' Report
- Committee Reports

Agenda (8:00 p.m.)

- The agenda is posted at the Coop Community Corner and may also appear elsewhere in this issue.

Wrap Up (9:30-9:45)
(unless there is a vote to extend the meeting)

- Meeting evaluation
- Board of Directors vote
- Announcements, etc.

Attend a GM and Receive Work Credit

Since the Coop's inception in 1973, the General Meeting has been our decision-making body. At the General Meeting (GM) members gather to make decisions and set Coop policy. The General-Meeting-for-workslot-credit program was created to increase participation in the Coop's decision-making process.

Following is an outline of the program. *For full details, see the instruction sheets by the sign-up board.*

- **Advance Sign-up Required:**
To be eligible for workslot credit, you must add your name to the sign-up sheet in the elevator lobby.
Some restrictions to this program do apply. Please see below for details.
- **Two GM attendance credits per year:**
Each member may take advantage of the GM-for-workslot-credit program two times per calendar year.
- **Certain Squads not eligible:**
Eligible: Shopping, Receiving/ Stocking, Food Processing, Office, Maintenance, Inventory, Construction, and FTOP committees. (Some Committees are omitted because covering absent members is too difficult.)
- **Attend the entire GM:**
In order to earn workslot credit you must be present for the *entire* meeting.
- **Childcare can be provided at GMs:**
Please notify an Office Coordinator in the Membership Office at least one week prior to the meeting date.
- **Signing in at the Meeting:**
 1. After the meeting the Chair will provide the Workslot Credit Attendance Sheet.
 2. Please also sign in the attendance book that is passed around during the meeting.
- **Being Absent from the GM:**
It is possible to cancel without penalty. We do ask that you remove your name if you know cannot attend. Please do not call the Membership Office with GM cancellations.
- **Is it FTOP or a Make-up?**
It depends on your work status at the time of the meeting.
- **Consider making a report...**
...to your Squad after you attend the meeting.

Park Slope Food Coop Mission Statement

The Park Slope Food Coop is a member-owned and operated food store—an alternative to commercial profit-oriented business. As members, we contribute our labor: working together builds trust through cooperation and teamwork and enables us to keep prices as low as possible within the context of our values and principles. Only members may shop, and we share responsibilities and benefits equally. We strive to be a responsible and ethical employer and neighbor. We are a buying agent for our members and not a selling agent for any industry. We are a part of and support the cooperative movement.

We offer a diversity of products with an emphasis on organic, minimally processed and healthful foods. We seek to avoid products that depend on the exploitation of others. We support non-toxic, sustainable agriculture. **We respect the environment.** We strive to reduce the impact of our lifestyles on the world we share with other species and future generations. We prefer to buy from local, earth-friendly producers. We recycle. We try to lead by example, educating ourselves and others about health and nutrition, cooperation and the environment. **We are committed to diversity and equality.** We oppose discrimination in any form. We strive to make the Coop welcoming and accessible to all and to respect the opinions, needs and concerns of every member. We seek to maximize participation at every level, from policy making to running the store. **We welcome all who respect these values.**

COMMUNITY CALENDAR

Community calendar listings are free. Please submit your listings in 50 words or less by mail, the mailslot in the entry vestibule, or GazetteSubmissions@psfc.coop. Submission deadlines are the same as for classified ads. Please refer to the Coop Calendar in the center of this issue.

**Denotes a Coop member.*

SUN, SEP 2

ALBUM MAKING BEES at Memories Out of the Box! Bring your photos and stories and make that album you've been meaning to make! Resources, refreshments, tools and support provided weekly! No fee! Thursdays 7—9 p.m. and Sundays, 4-8 p.m. Memories Out of the Box. 633 Vanderbilt Ave. btw St. Marks and Prospect Place. (718) 398-1519

SAT, SEP 8

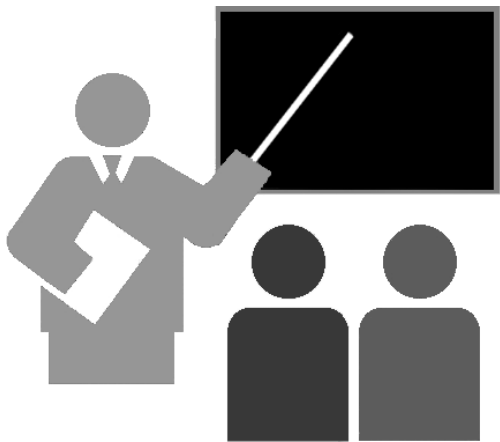
DANCING FOR ANIMALS, a non-profit organization, is holding Saturday-night dance parties on alternate Saturdays through Dec 15. Intro dance class 8:30-9:30 p.m. General dancing 9:30-12:30 a.m. Dance Times Square, 156 W. 44th St., 3rd floor. \$10. 212-946-1824 www.dancingforanimals.org

MON, SEP 10

FARMERS SPEAK OUT: The Global Struggle for Food Sovereignty. Free panel discussion on global food justice featuring prominent farm leaders from Latin America. Part of a series of events engaging international campesino leaders with local food advocates. 5:00-7:30 p.m. The New School, 55 W. 13th St. To register, visit www.world-hungeryear.org

WED, SEP 5

The Brooklyn Co-Housing Group is actively recruiting new founding members to design and build a child-friendly community-minded apartment complex here. Contact Alex Marshall at alex@alexmarshall.org or 212-227-9392 for information.



The Orientation Committee Needs You!

We are looking for energetic Coop members with a teaching or training background who can work Sunday afternoons, Monday or Wednesday evenings, or Wednesday mornings. Orienters lead sessions every six weeks, and on the week midway between sessions you must be available as backup for emergency coverage. Only Coop members with at least two years of membership will be considered.

Workslot credit will be given for training sessions. An annual meeting of the Orientation Committee is part of the work requirement.

For more information, contact the Membership Office or write to karen_mancuso@psfc.coop.

Puzzle Answer

S	T	A	R		H	E	R	O	N		U	S	E	D
N	I	T	E		A	M	E	B	A		T	E	A	R
O	A	T	S		S	U	P	E	R		E	E	R	Y
W	R	A	I	T	H		A	S	C	E	N	D	S	
Y	A	R	D	S			Y	E	S	E	S			
					E	A	C	H			L	I	M	E
E	L	M			R	O	A	S	T		S	L	O	P
B	E	E	F		D	R	I	E	D		S	T	E	T
B	A	S	I	L		D	R	A	I	N		H	E	S
S	N	A	R	E					K	E	E	L		
					M	A	R	S	H		X	Y	L	E
	M	A	N	D	A	T	E		S	T	R	O	D	E
R	A	R	E		W	O	R	S	T		I	C	E	S
A	C	E	S		E	N	D	U	E		C	A	M	S
M	E	S	S		R	E	S	E	W		S	L	A	Y



ATTENTION BUSINESS OWNERS

The Park Slope Food Coop invites merchants, service providers and business owners to join an exciting community-building program at the Coop, the Community Ties Program! This is a directory of businesses offering exclusive discounts to Park Slope Food Coop members, at www.foodcoop.com. The program connects our dynamic membership of more than 13,000 with participating neighborhood merchants.

Merchants who register with the Community Ties Program offer PSFC members who show a Coop membership card a discount or some other special offer that is not available to the general public.

We may provide your business with literature identifying you as a participant in the program. We periodically publish a list of participants with a description of the type of services/merchandise provided and the special offer; that is, continuous, free advertising to our vast membership.

If you would like to include your business in our listing, leave a voicemail message for Camille Scuria at: 888-922-2667, mailbox 87. In your message include your business name, category, address, phone number, and your contact name. We'll contact you about the exclusive discount that you will offer to PSFC members.

Diversity and Equality Committee Looking for Additional Members

The Diversity & Equality Committee (DEC) is dedicated to improving human relations and communications through impeccable interpersonal interactions, policies and procedures in the Coop. Our goal is to work toward preventing and eliminating discrimination in the Coop. The DEC has met on a monthly basis since 2004 to promote the ideal of equal and respectful treatment between all Coop members and paid staff regardless of each individual's different identity. The DEC also aims to provide advocacy for individuals who feel they have experienced discriminatory practices in the Coop.

In order to be considered for the Diversity and Equality Committee, you must have at least one year of Coop membership, have an excellent attendance record, have the ability to be accountable, to take initiative, to work independently, be organized, and have an ability to work collaboratively with others. In addition, the committee meets monthly on second Thursday of the month from 6:30 pm—8:00 pm. These meetings are mandatory. Committee members also work outside the meetings on projects for their subcommittees. Work on the Committee is recorded on an hour-for-hour basis.

The Committee is organized into subcommittees by area. The specific sub-committee needs and skills are detailed below. In addition, we are looking for a secretary for the committee as a whole.

Please specify which sub-committee(s) interest you (each member participates in only one sub-committee). To express interest contact Jess Robinson at the Food Coop via e-mail at jess_robinson@psfc.coop or phone at (718) 622-0560. Please be prepared to provide a listing of your relevant experience, along with your Food Coop member number.

Committee Secretary
To record and distribute the monthly DEC minutes. The necessary skills are:

- Ability to comprehend what is being stated and record it accurately in writing.
- Ability to do word processing and distribute minutes via e-mail from home.

The Diversity Education Sub-Committee
Needs 4-5 new members. The necessary skills are:

- Committed to the concepts of "diversity". Other terms that "resonate" in the "industry" are "multicultural" "pluralism" and "inclusion"
- Superior Relationship/People skills—pro-active, savvy, and non-judgmental relating to all types of people.
- Basic Group Facilitation—have experience leading workshops, ideally around diversity issues.
- Public Speaking skills, conflict resolution skills, and mediation skills

The Survey Sub-Committee
Needs 4-5 new members with interest relevant to conducting a study of Coop members' experiences

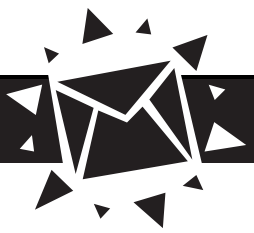
with bias or discrimination at the Coop. The necessary skills are:

- Data entry skills: Qualitative & quantitative data analysis software (such as SPSS) experience
- Writing skills for documenting and presenting study findings

Complaint Review Sub-Committee
Needs 2 new members, a secretary and a member with mediation skills. The necessary skills for each position are:

- Mediator: Needs excellent conflict resolution and mediation skills; good editing and writing skills; compassionate; impartial; good investigative skills; critical thinking skills; good interviewer; attend a hour and a half subcommittee meeting every month in addition to the general DEC meeting.
- Secretary: Take dictation and detail notes; transcribe and archive; data entry and general computer skills; good editing and writing skills; compassionate; impartial; good investigative skills; critical thinking skills; good interviewer; able to attend a hour and a half subcommittee meeting every month in addition to the general DEC meeting





LETTERS TO THE EDITOR

NO PESTICIDES!

DEAR COOP

I am appalled that Mayor Bloomberg has decided to renew the city's mass-spraying of pesticides to kill mosquitoes. In addition, I (along with the No Spray Coalition and the Brooklyn Greens) condemn the City's advice that people should use insect repellants containing DEET. DEET is especially dangerous for children and should NEVER be used; it is associated with numerous infant deaths.

The No Spray Coalition is also deeply troubled by NYC's reckless spraying of Anvil 10 + 10 to kill mosquitoes...and, bees, frogs, dragonflies, butterflies, lobsters, crabs.

I was a plaintiff in a federal lawsuit brought seven years ago against Giuliani and the NYC government. That lawsuit ended in April 2007 when NYC signed a settlement agreement acknowledging that pesticides:

- may remain in the environment beyond their intended purpose
• cause adverse health effects
• kill mosquitoes' natural predators (dragonflies, bats, frogs)
• increase mosquitoes' resistance to the sprays, and
• are not presently approved for direct application to waterways.

The Department of Health contravenes that settlement. It states "There are no significant risks of adverse impact to human health associated with the proper use of this product." This is simply not true. The spraying puts many NYC residents and visitors at grave risk. The spraying jeopardizes a thousand times more people than the disease.

The pesticide the City is spraying—"Anvil 10 + 10"—belongs to a class of adulticides known as pyrethroids, which are endocrine disruptors. They mimic hormones such as estrogen, and may cause breast cancer in women and drastically lower sperm counts in men.

Pyrethroids have also been associated with prostate cancer, miscarriages and preterm delivery, asthma, toxicity to many vital organs including the nervous system, liver, kidneys and the gastro-intestinal tract, skin rashes, itching and blisters, and nausea and vomiting.

Anvil contains the cancer-causing chemical piperonyl butoxide, which the Environmental Protection Agency lists as a suspected carcinogen.

It also contains Sumithrin—a lab-made toxin—as well as benzene-related chemicals (which the manufacturer

calls "inert ingredients").

Thousands of New Yorkers were severely sickened by the spraying in 1999 and 2000. A number of members of the No Spray Coalition, my friends, died from pesticide-related illnesses.

Today, many suffer from Multiple Chemical Sensitivities (MCS) or asthma caused or exacerbated by the spraying. The City administration must be made to understand that pesticides are extremely dangerous to human health as well as to the natural environment, and have long-term consequences.

I hope you'll join me in urging the City to stop pesticide spraying immediately, reconsider its entire approach and seek alternative, safe means to control mosquitoes. There are natural, safe ways to repel mosquitoes. Poisoning the entire population is not one of them.

You can send a message directly to Mayor Bloomberg at www.nyc.gov/html/mail/html/mayor.html

For more information: www.no spray.org

Mitchel Cohen
No Spray Coalition, and
the Brooklyn Greens/Green Party

GRIP OF THE STRIP

Graham, five, was visiting
Granny in Park Slope;
Home's a suburb of San Fran,
Wealthy, small in scope.
She showed him the commercial strip,
Seventh Avenue,
Chockablock with dazzling shops,
Items old and new:
Silver scooters, pigskin footballs,
Yankee uniforms,
Action figures somehow changing
Into meteor swarms.
Early the next day, with Gran
Still in her dressing gown,
Graham, eyes ablaze, implored,
"Can we go into town?"

Leon Freilich

ALBERT'S VIEW

DEAR COOP

"...a fact that allows us to hope the Resurrection will reflect a considerable attention to detail."—Marilynne Robinson in Housekeeping.

Two possible reactions to David Meltzer's astonishing 700+ votes compared to about 1,100 for the next-highest candidate: At the July meeting the Controllers passed an amendment to the Bylaws that would legalize the nit-picking and incomprehensible Yes-and-No voting we have always had. See the July 19th Gazette.

And an unusual article by Barbara Ensor entitled "Ship Shape Shift" glowingly praises the culture and accomplishments of a Saturday C2 squad with George Boziwick and Ken Browd that is, presumably, an example of what David Meltzer's squad was not. According to David, however, morale at his squad was high and, maybe, check-out time was as good or better!

WBAI News: When you get this it will be too late to join WBAI, but if you are a member the period for voting is October 15th to November 15th, a very short time indeed. So keep up to date. Listen to WBAI 99.5 FM (not a good source for election information), go to Pacifica.org for updates. Remember that these dates are "Proposed" and as with everything Pacifican, if it can get screwed up it will! It's a good idea to confirm your membership now by calling 212-209-2800 and asking for the Membership Department—you may be surprised by the results!—and to get a written confirmation of your membership in the form of a membership card! A similar procedure would be appropriate starting about October 22nd if you have not received an election package by that date. We are not kidding—some very odd things have and will continue to happen at BAI. You know the thing about, uh, eternal vigilance... BTW, Justice and Unity has paralyzed

most committees so that there can be no meetings unless J&U majorities show up. Hence the Management Evaluation, General Manager Search, Programming and other committees have hardly met in three years. One exception is the Local Station Board (LSB) Radio Report Committee which has a non-J&U majority and whose membership includes... moi. We have met about 15 times in the last three months and are still going strong. Arts Director Janet Coleman and Public Affairs Director Kathy Davis (also a staff delegate) are very active there, and other staff members have taken an interest and/or attended. It is an astonishing struggle reminiscent of a soccer game—where the Committee painstakingly develops a proposal for the program, then the J&U-dominated LSB undoes all their work, and then back again. This is the birth of a nation, friends, the first American radio network where subscribers vote for delegates who have real power. It ain't pretty!

See as much as you can stomach at PACVIDI.com (Page 3), the website for Opposition films and still pictures. Other resources are WBAI.net (not associated with Pacifica), glib.com and ListenerForums.net.

A. Solomon
Homœopathic Visionary
718-768-9079, hobces@yahoo.com

LETTERS POLICY

We welcome letters from members. Submission deadlines appear in the Coop Calendar. All letters will be printed if they conform to the published guidelines. We will not knowingly publish articles which are racist, sexist or otherwise discriminatory

The maximum length for letters is 500 words. Letters must include your name and phone number and be typed or very legibly handwritten. Editors will reject letters that are illegible or too long.

You may submit on paper, typed or very legibly handwritten, or via email to GazetteSubmissions@psfc.coop or on disk. Disks are returned through an envelope at the back of the Gazette submissions box.

Anonymity

Unattributed letters will not be published unless the Gazette knows the identity of the writer, and therefore must be signed when submitted (giving phone number). Such letters will be published only where a reason is given to the editor as to why public identification of the writer would impose an

unfair burden of embarrassment or difficulty. Such letters must relate to Coop issues and avoid any non-constructive, non-cooperative language.

Fairness

In order to provide fair, comprehensive, factual coverage:

- 1. The Gazette will not publish hearsay—that is, allegations not based on the author's first-hand observation.
2. Nor will we publish accusations that are not specific or are not substantiated by factual assertions.
3. Copies of submissions that make substantive accusations against specific individuals will be given to those persons to enable them to write a response, and both submissions and response will be published simultaneously. This means that the original submission may not appear until the issue after the one for which it was submitted.

The above applies to both articles and letters. The only exceptions will be articles by Gazette reporters which will be required to include the response within the article itself.

Waste Not: The Coop's Battle vs. Trash

CONTINUED FROM PAGE 1

up into boxes and taken over that day, or put into composting bins in the brick-lined alley-like yard behind the Coop until it can be hauled to the garden.

Alas, not all refuse can be so readily reused, and while the Coop does inevitably throw things away, there's a concerted effort to minimize its landfill contributions. Recycled materials like cans and bottles that carry a deposit are returned to their manufacturers. Other recycled materials, like bottles and juice cartons or cardboard boxes—anything that New York City recycles—are picked up by the Coop's

carter (a private sanitation company that hauls off trash and recyclables).

But there are times when the Coop must get creative to not create excess waste. For example, Holtz enlists a "crate man," as he calls him, to pick up the Coop's unrecyclables, such as the wooden crates and tomato boxes in which produce is shipped. The crate man then sells these back to local farmers, pocketing the income for himself, while the Coop helps keep these items out of landfill. Some of the boxes are also given directly to Hepworth Farms.

The Coop also collects its own office paper in blue bins—there are two bins on the shopping floor, next

to the entry and exit desks—and one of the member workslots entails delivering it to a private paper recycler (our carting company doesn't take paper). Another workslot is charged with delivering the ubiquitous plastic film that now covers so many grocery boxes to the Brooklyn company AAA Polymer, which uses the film to create plastic bags that the Coop then uses for its own trash and recycling.

While the arrangement with AAA Polymer demonstrates how companies can utilize local sources to find new uses for waste, it also highlights some of the challenges of conscientious trash reduction. Five years ago, says Holtz, groceries came in boxes. "Now, everything comes sealed in film," he lamented as he wandered

through the storage area, pointing out jars of tomato sauce ensconced in cardboard and sealed with plastic.

Still, as businesses find ever-novel ways to create waste, the Coop continues to look for new methods to reuse would-be garbage. This makes economic as well as environmental sense. Composting, donating and reducing our waste saves the Coop thousands of dollars. Indeed, just ask the guys from D&D Carting who haul away our trash. "They wanted to know why our garbage is so light," says Holtz. After he explained the Coop's many methods of giving its trash a second lease on life, one of the carting guys said, "Oh, that's why. If it were heavy, I'd have to charge you a lot more." ■

COMMERCIAL SPACE

PROFESSIONAL OFFICES available. Ideal for massage therapist, acupuncturist, psychotherapist, etc. Be part of a holistic center, either in a beautiful Soho section or in an excellent Brooklyn neighborhood. Doctor will introduce all patients to you. For information call 212-505-5055.

MERCHANDISE

TEMPUR-PEDIC MATTRESSES, NECK pillows, comfort products & accessories. Mattress comes with a 20-year guarantee & a 3-month trial period. The ultimate in comfort & pressure relief. Truly will improve the quality of your sleep. Call Janet at Patrick Mackin Custom Furniture—a T-P dealer for 10 yrs, 718-237-2592.

MERCHANDISE NON-COMMERCIAL

FOR SALE: Ceilerciser, new plus accessories, \$200; Braun 10-cup coffeemaker, \$15; gold-plated jewelry signed by artist (vintage), \$20–40. Call 718-768-1598.

PETMATE KENNEL for large dog. 24" wide X 34" long X 30" high. Heavy duty plastic with removable cushion and metal gate. \$25. Linda 718-783-4404 or Larjo411@aol.com

JUICER CHAMPION 2000t perfect condition, 1 year old, infrequently used. \$125 or best offer. Call 718-376-1639. Please leave message for Sam.

NORITAKE CHINA, SERVICE FOR 12 IN MINT CONDITION. Creston pattern, yellow, gold and sage. Includes serving dishes, extra cups and saucers. Hand painted, no imperfections. \$100. Call Carol 718-436-5359 eves. and weekends.

FIT, BLACK FELINE, fine-tuned pretty girl cat FREE. She needs to be far away from my 13 lb. tom cat who hates her! Call 718-686-8270 to save this kitty's life! Take this sweet young thing home.

FULL-SIZE SEALY Sapphire LE mattress, plush Euro pillow top. 1 yr old. \$1000 NEW, now \$300. Roller blades. Crossfire. Men's size 9. Brand new. \$175 NEW, now \$100. Donnie Rotkin 718-768-1797.

BREW YOUR OWN Kombucha! Stop buying bottles of Synergy—make your own. I can give you a live culture and instructions, and I ask only \$5 to cover costs. Call Teresa at 347-244-6566 or email teresatheo@gmail.com.

MERCHANDISE WANTED

GOT VINTAGE PHOTOS OF PARK SLOPE? Local writer looking for shots of street scenes, landmarks and lost buildings (taken before 2000) for neighborhood history book. If your pic is used in print, you get credit and a copy of the book. Please send info/images for consideration by Sept. 1 to parkslopehistory@mac.com

SERVICES

TOP HAT MOVERS, INC., 145 Park Place, Bklyn. Licensed and Insured Moving Co. moves you stress-free. Full line of boxes & packing materials avail. Free estimates 718-965-0214. D.O.T. #T-12302. Reliable, courteous, excellent references & always on time. Credit cards accepted. Member Better Business Bureau.

SPRING YOUR FLOORS TO LIFE by sanding and refinishing! Floor mechanic will install, repair, refinish

wooden floors. Reasonable prices. Good references. Call Tony—Cell phone: 917-658-7452.

MADISON AVENUE HAIRSTYLIST in Park Slope one block from coop-by appointment only. Please call Maggie at 718-783-2154 at a charge of \$50.

PAINTING-PLASTERING+PAPER-HANGING-Over 25 years experience doing the finest prep + finish work in Brownstone Brooklyn. An entire house or one room. Reliable, clean and reasonably priced. Fred Becker - 718-853-0750.

COMPUTER HELP-CALL NY GEEK GIRLS. Setup & file transfer; hardware & software issues; data recovery; viruses & pop-ups; networking; printer/file sharing; training; backups. Home or business. Mac and PC. Onsite or pickup/drop off. References, reasonable rates. Longtime Coop member. 347-351-3031 or info@nygeekgirls.com

NEED AN ELECTRICIAN CALL ART CABRERA, celebrating 35 yrs in the electrical construction industry. No job too large or small specializing in trouble shooting, 220 wiring, fans, lights, total or partial renovations. Expert in Brownstone renovations. Serving Park Slope since 1972, original coop member, P.S. resident. 718-965-0327



ATTORNEY-EXPERIENCED Personal Injury Trial Lawyer representing injured bicyclists & other accident victims. Limited caseload to insure maximum compensation. Member of the NYSTLA & ATLA. No recovery, no fee. Free consult. Manhattan office. Park Slope resident. Long time PSFC member. Adam D. White 212-577-9710

EXPRESS MOVES. One flat price for the entire move! No deceptive hourly estimates! Careful, experienced mover. Everything quilt padded. No extra charge for wardrobes and packing tape. Specialist in walkups. Thousands of satisfied customers. Great Coop references. 718-670-7071

PARK SLOPE SAT TUTOR. I am a college English professor and I received my MFA from Columbia University. I've been teaching for over 7 years. As an SAT tutor, I assess individual strengths and weaknesses, targeting those specific areas. We all learn differently. Reasonable rates, excellent ref. 917-797-9872 or beritanderson@gmail.com www.beritanderson.com

HAIRCUTS COLOR OIL Treatments. Adults, kids in the convenience of your home or my home. Adults 30.00. Kids 15.00. Call Leonora, 718-857-2215.

OLIVE DESIGN INTERIOR DECORATING: Color consulting, furniture selection and placement, rugs, window treatments. Use what you have or start fresh. See website for more information and rates: www.olivedesignNY.com

ATTORNEY—Personal Injury Emphasis. 30 yrs. experience in all aspects of injury law. Individual attention provided for entire case. Free phone or office consultations. Prompt, courteous communications. 18-yr. Food Co-op member; Park Slope resident. Tom Guccione, 718-596-4184.

SERVICES-HEALTH

HOLISTIC DENTISTRY in Brooklyn (Midwood) & Manhattan (Soho). Dr. Stephen R. Goldberg provides family dental care utilizing non-mercury fillings, acupuncture, homeopathy, temporo-mandibular (TM) joint therapy & much more. For a no-obligation free initial oral examination, call 212-505-5055. Please bring X-rays.

HOLISTIC OPTOMETRY: Most eye doctors treat patients symptomatically by prescribing ever-increasing prescriptions. We try to find the source of your vision problem. Some of the symptoms that can be treated include headaches, eye fatigue, computer discomfort, learning disabilities. Convenient Park Slope location. Dr. Jerry Wintrob, 718-789-2020. holisticeyecare.com

RELIEVE LOWER BACK and neck pain, shoulder, chronic tension and stiffness - poor digestion - headache - insomnia - stress. Rejuvenate body, mind and spirit with shiatsu. Special first session offer \$80. Contact Claudia Copparoni. 14 yrs experience. clcoppa@hotmail.com, 718-938-5573.

WOMEN WHO DON'T HAVE TIME to waste. Short-term psychotherapy for women interested in moving their lives forward. Over 20 years experience working with depression & anxiety, relationship issues, body image & self-esteem. Come in for free consultation and see how we work together. Reasonable fees. Call Gail 718-857-0436.

WHEN NOTHING ELSE WORKS. Been there, done that and you're still scared, sad, frustrated, angry, sick or stuck? Take heart! Awaiting you is a quick, effective acupressure technique: EFT. Only one session probable. Money back guarantee agreements. Groups forming. Call today. Carolyn Meiselbach, EFT-ADV. 718-858-0452.

PSYCHOTHERAPY with a licensed psychologist who has post-doctoral training in individual, couple and family therapy. Insurance accepted. Evening and weekend appointments available in centrally located Park Slope office. For an appointment please call Dr. Helen Wintrob at 718-783-0913 or 917-974-3966.

WHAT'S FOR FREE

FREE INITIAL ORAL EXAM in holistic dental office for all Coop members. X-rays are strictly minimized so bring your own. Dr. Goldberg's non-mercury offices in Soho or in Midwood section of Brooklyn. For info please call 718-339-5066 or 212-505-5055.

What's the best way YOU can commemorate the 6th anniversary of 9/11?

Come to the 9/11 Truth: Ready For Mainstream Weekend!
Over 15 nationally known researchers presenting hard facts disproving the official version of 9/11, effects of "social engineering", solutions for truth, justice, peace and progress.
Sept. 8th-9th, @ Cooper Union, 7th St. & 3rd Avenue, NYC
Tickets on sale. Details at www.ny911truth.org or 212-714-7147.
Honor the victims. Get informed. Connect and get active.

Complete Piano Care

Tuning • Repair • Advice • Appraisals

CLIMATE CONTROL SYSTEM
SALES AND INSTALLATION
Call: 347-413-5498
William R. Wright • 845.527.7155
splungeone@msn.com



THE CHILDBLOOM
GUITAR PROGRAM

A NEW MUSIC PROGRAM FOR
CHILDREN IN BROOKLYN!
Age 5-12 years

- Individual attention in a low pressure environment.
- A method that works. Over 25 years of making musicians!
- Affordable addition to family culture.
- Scheduled with you in mind.



Director: Bill Wright
347-413-5498 • www.childbloom.com

Prompt & Courteous
Licensed & Insured
Free Estimates



Residential & Commercial
Packing & Supplies
Local & Long Distance



Top Hat Movers, Inc.

718.965.0214 ☎ 718.622.0377 ☎ 212.722.3390

www.ParkSlopeMassage.com
Specializing in Deep Tissue Massage Therapy

Mary Rose Dallal, MA, LMT
NYS Licensed, Nationally Certified
Professional Member, AMTA

718.636.3996

mrd@ParkSlopeMassage.com

TEL: (718) 832-0900
(516) 593-1818

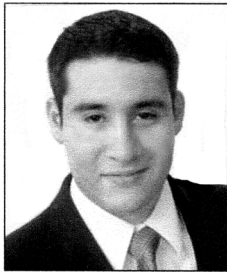
FAX: (718) 832-3470
usaexterm@aol.com

USA SERVICE INDUSTRIES

EXTERMINATING & BIRD EXCLUSION
COMMERCIAL • RESIDENTIAL • INDUSTRIAL
MARBLE & WOOD FLOOR POLISHING & BUFFING
POWER WASHING • ODOR CONTROL • RADON TESTING
CARPET & UPHOLSTERY CLEANING • AWNING & SIGN CLEANING
GRAFFITI REMOVAL • COMMERCIAL KITCHEN DEGREASING & CLEANING

MARTY GLUCKSMAN
VICE PRESIDENT • SERVICE CONSULTANT

475 3RD AVENUE
BROOKLYN, N.Y. 11215



MetLife®
Guarantees for the if in life.™

Luis G. Hernandez
Financial Services Representative
One Penn Plaza, Suite 409
New York, NY 10119
lhernandez@metlife.com

Call Luis today at (212) 560-4484.

Guarantees apply to certain insurance and annuity products (not securities, variable or investment advisory products) and are subject to product terms, exclusions and limitations and the insurer's claims-paying ability and financial strength. Metropolitan Life Insurance Company, 200 Park Avenue, New York, NY 10166 L07071368[exp0709][All States]