

Established  
1973

# LINEWAITERS'

## GAZETTE

100%  
SOY BASED  
Ink System  
Contains no toxic solvents

Volume 11, Number 17

August 21, 2014



ILLUSTRATION BY DEBORAH TINT

## General Meeting Considers New International Trade Education Squad

### Eden Foods Discussion Postponed

By Frank Haberle

The July 29 General Meeting (GM) discussed the formation of a new work squad to address international trade agreements. Members voted favorably on the nomination of a new member for the Hearing Administration Committee. An anticipated discussion of a boycott of Eden Foods prod-

ucts was tabled for another meeting when the presenter called at the last minute to cancel, leading to a lively debate on GM structure and protocols. General Coordinators reported on finance, recent construction projects, produce and the pension plan. Committee reports from the GMO Labeling squad and the team redesigning the

website rounded out the evening's events.

#### Coordinator and Committee Reports

Tricia Leith, General Coordinator, reported on a 20-week financial statement for the Coop, pointing out that net sales of \$19.5 million are

CONTINUED ON PAGE 4

## Coop Getting Three Upgrades This Summer

By Ed Levy

Shopping with one-pointed attention, one eye on how far the checkout line wraps around the freezer case, we forget we are actually moving through three nineteenth century buildings that have been modified, renovated, adapted, upgraded and customized to house the intricate dance that is the Coop.

Periodically, those old structures need our attention. Currently, that attention is focused on repairs to the west wall, renovations to the south office and a variety of improvements to the checkout area, many of them already in place.

#### The West Wall

The "west wall" (no known religious significance) is currently shrouded in scaffolds and dark safety netting looking like a stage on which the curtain is about to rise. The repairs going on are largely precautionary, General Coor-



PHOTO BY ED LEVY

Crack in north wall to be fixed during roof repairs.

CONTINUED ON PAGE 5

#### Next General Meeting on August 26

The General Meeting of the Park Slope Food Coop is held on the last Tuesday of each month. The August General Meeting will be on Tuesday, August 26, at 7:00 p.m. at MS 51, 350 Fifth Ave., between Fourth and Fifth Sts. Enter on Fourth St. cul-de-sac. The Fourth St. entrance is handicap-accessible.

The agenda is in this *Gazette*, on the Coop website at [www.foodcoop.com](http://www.foodcoop.com) and available as a flier in the entryway of the Coop. For more information about the GM and about Coop governance, please see the center of this issue.

#### IN THIS ISSUE

Knowing Where Your Coffee Comes From	2
Puzzle	3
More Photos From Recent Coop Upgrades	6
Coop Hours, Return Policy	8
Coop Calendar, Governance Information, Mission Statement, Welcome	9
Calendar of Events	11
Letters to the Editor	12
Classifieds, Community Calendar	15
Exciting Workslot Opportunities, Thank You	16

## NO NEW-MEMBER ORIENTATIONS

Due to renovations on the Coop's second floor we will NOT hold Orientations until September.



# Knowing Where Your Coffee Comes From

By Alison Rose Levy

This American civilization runs on two fuels: oil and coffee; and after oil, coffee is the second most valuable traded commodity. The remote, mountainous, high altitude and rural regions where coffee grows tend to be poor regions. That's why when it comes to compensation, the farmers who grow it and the farm workers who pick it are worlds away (both literally and economically) from the Americans beginning their hectic work day with a barista-concocted brew. While 90% of coffee is produced in developing countries, most coffee is consumed in developed countries. A cartoon in "The History of Authentic Fair Trade" by Phyllis Robinson and Nicholas Reid portrays an American coffee lover, saying, "Excuse me waiter, there's the blood and misery of a thousand small farmers in my coffee." Twenty-five million people are employed in global production, (mostly small farmers) but Americans are largely ignorant of the blood, sweat and tears spilled abroad.

## Enter Equal Exchange

It was to level that playing field just a bit (or tilt it a little more towards the farmer) that Equal Exchange was founded in the mid-1980s. Among its chief principles were to:

- Build long-term direct relationships with democratically run small farmer coops, based on dialogue,

transparency and respect

- Pay fair prices
- Ensure advance credit
- Promote sustainable agriculture
- Use transparent financial and business practices

According to Equal Exchange spokesperson (and co-owner) Rodney North, identifying and building supply chains of small coop

farms was the initial challenge when they started back in the 1970s and 80s. Committed to the coop model, Equal Exchange is a worker-owned cooperative. With 115 co-owners, it's based in Massachusetts, but operates nationally.

## Fair Trade Rules

By the mid-1990s, as Fair Trade gained momentum, it became essential to guarantee that so-called Fair Trade suppliers actually followed core Fair Trade principles. To that end, Equal Exchange

helped found Transfair USA, which certifies the producer organizations and the companies selling the products. In return, products can use the Transfair USA seal.

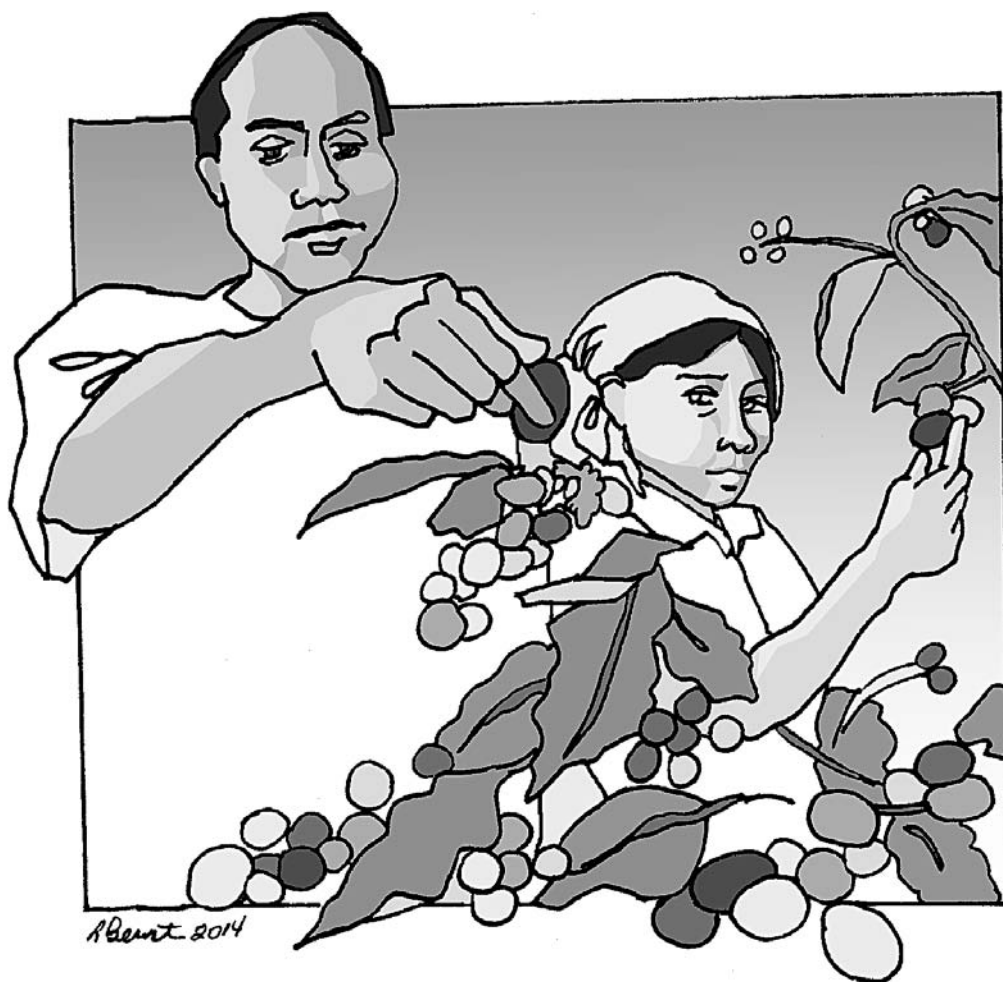
*"True Fair Trade is like a marriage. On the regular market, it's more like a series of one-night stands."*

—Rodney North, Equal Exchange

The relationships extend

beyond paying fair prices for the coffee. Fair Trade principles also entail building commitment and relationships. "Coffee is a 'Goldilocks' crop," North says. "It requires predictable weather and stable temperatures. Climate change makes weather more volatile which makes farming more risky."

To offset that risk, Fair Trade companies advance credit, so that if bad weather produces a poor crop, the risk is shared between the farmer and the purchaser, rather than burdening the farmer



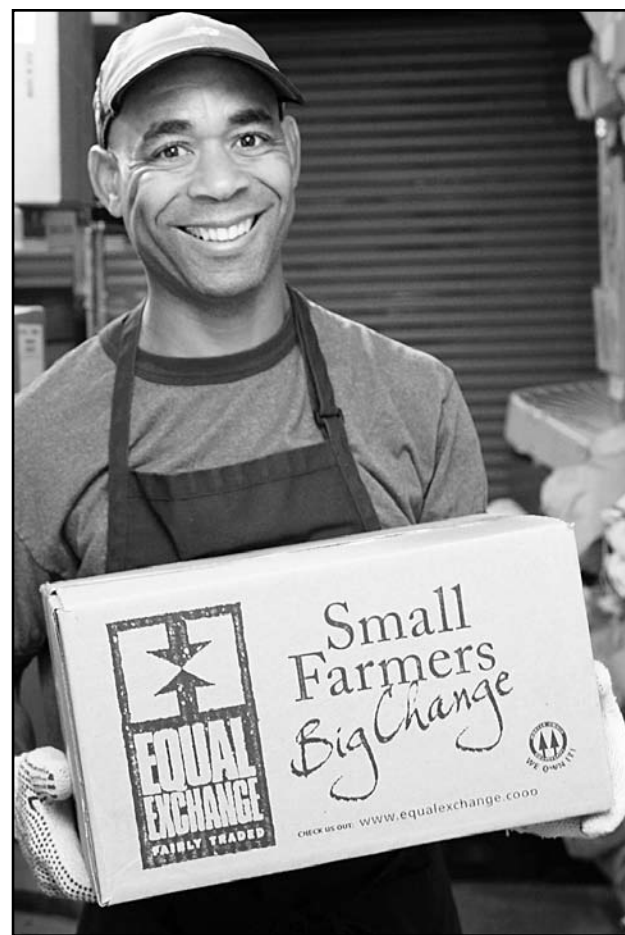
ILLUSTRATIONS BY LYNN BERNSTEIN



Elena Day fueling up with Fair Trade coffee.



Mike Lenner refilling the bulk container for Fair Trade Peruvian coffee.



Andy Latouche pulling a box of Fair Trade coffee from the basement to send to the shopping floor.

PHOTOS BY ROD MORRISON



d'Beumt © 2014

alone. This helps the small communities producing coffee build infrastructure, better health, refine their coffee growing techniques and improve their lives. Yet today the Fair Trade designation does not always guarantee fair trade practices.

"Tea is a classic colonial crop grown on large plantations covering tens of thousands of acres," North explains. In following the colonial model, plantations are not equitable or cooperative. The workers are more like slaves. "For those millions of workers nothing has changed for a hundred years—even in Fair Trade," says North.

Among the four Fair Trade certifying organizations, standards differ. The largest, Fair Trade USA "certifies plantations," according to North. This means that instead of workers sharing in ownership as they do in the Coop model, the poorest farm workers are still exploited. Another certifier, the Rainforest Alliance follows Fair Trade principles on only about 30% of their products.

"True Fair Trade is like a marriage. On the regular market, it's more like a series of one-night stands. It doesn't guarantee minimum product purchases. It doesn't offer the farmer protection against boom and bust cycles. It might just be paying the farmer the market price," which is usually set lower than the Fair Trade price guarantee.

### The Dilution of Fair Trade

As demand for coffee supply increased, the pressure to expand came with it.

"In the rush to certify as many things as possible, certifiers are diluting original standards," North warns. "To expand their business and supply more products, they try to make it work for corporations. No, that is not Fair Trade. Fair Trade is supposed to build supply chains and relationships with small farmers."

*"The new partnership [with Brooklyn Roasting] will allow us to concentrate on our work with farmers to buy higher volumes of their coffee. We can spend more time at the point of origin working with the farmers to tailor sustainability programs that meet the farmer's needs."*

—Taylor Mork, CroptoCup

This means that it's harder to know whether the Fair Trade seal and designation are always meaningful. "The coffee industry is fragmented," North says. "There are about a dozen companies that are supplying 100% Fair Trade coffee—but some are only doing it a little bit and some are getting it from suspect suppliers."

In addition, a new form of

coffee supplying has sprung up. Called "Direct Trade," this term indicates that the suppliers have traveled to the coffee regions of the world and built their own supply chains. But North cautions that, "Direct Trade suppliers are not certified and different roasters trade differently. Some are "high bar" and some are not. Since they are not certified, there's no way for a consumer to know whether or not they are fully committed to changing the markets for farmers." Non-certified suppliers may also mix their coffee sources, making it impossible to know what percentage of the end product is fairly sourced.

### The Merger of Two Brooklyn Coffee Companies

Recently, two successful Brooklyn-based coffee suppliers have merged. One is a Coop supplier, a firm called CroptoCup. It has partnered with Brooklyn Roasting so that each side of the partnership can do what they do best. In the new partnership, CroptoCup will source and import green coffee while Brooklyn Roasting will roast, package and distribute the coffee.

"The new partnership will allow us to concentrate on our work with farmers to buy higher volumes of their coffee," explains CroptoCup's Taylor Mork, who co-founded the company with Jake Elster. "We can spend more time at the point of origin

## Fragmented

The word fragments need to be recombined to form answers to the clues below. When all clues are answered, the remaining fragments can be used to form a final related word. Each fragment will be used only once.

TA	GO	ROC	TI
DEM	NIC	SH	UNF
KY	YWI	ON	ICA
GI	CRA	VEN	PLA
NN	TO	ERS	OR
AR	CH	ACA	GO

Jason's boat \_\_\_\_\_  
Stock market event \_\_\_\_\_  
Bulwinkle's pal \_\_\_\_\_  
Fraction of a company \_\_\_\_\_  
Windy City \_\_\_\_\_  
Ginormous \_\_\_\_\_  
Not pardoned \_\_\_\_\_

Puzzle author: Stuart Marquis. For answers, see page 14.

working with the farmers to tailor sustainability programs that meet the farmer's needs." CroptoCup's growers are located in East Africa and Indonesia. The company's Banyan blend, East Africa dark French roast, Juju espresso, and Ugandan Uganda Bugisu are now being sold at the Coop. The company follows the Direct Trade model.

"Many roasters source directly and no one knows where the money goes," explains Michael Pollack, an owner of CroptoCup's new partner, Brooklyn Roasting. (Pollack is currently the Director of Green Coffee.) "In the media, there's been a lot of enthusiasm about Direct Trade, thanks to the claim that suppliers can source a better quality of coffee. But no one talks about the quality of life for the farmer."

According to Pollack, "The typical Direct Trade buyer goes year to year. If one year's crop is no good, they walk away. Historically, colonial farming is not a good life. It begins with slavery and goes downhill from there." That's why Brooklyn Roasting is pleased to partner with CroptoCup.

"We've known them since they started and admired the integrity of the work they are doing. There's a transparency about where their money goes at origin. Typically people

who do Direct Trade, you don't know where the money goes. A coffee farmer might represent that they provide Fair Trade benefits, but you are counting on them to do what they say they are doing. Coffee is grown in some not so nice places. We are thrilled to help CroptoCup do the sourcing at origin work they do." ■



## GM Report

CONTINUED FROM PAGE 1

slightly ahead of last year; that Coop expenses are also a little bit higher than a year ago; and that the Coop is successfully paying down the member loan program, currently owing \$462,000, down \$244,000 from a year ago. Ann Herpel, General Coordinator, reported on recent construction projects, including scaffolding on the outside of the building to repair bricks and roof; the introduction of new front-end additions to speed people moving in and out of the Coop; and repairs to the upstairs office. Allen Zimmerman asked if members would be interested in meeting Amy Hepworth of Hepworth Farms—the supplier of more than 50% of our local produce—to discuss the future of farming in the Hudson Valley, and received an overwhelming show of hands in support. Joe Holtz reported on the status of the pension plan that the Coop established for its workers in 1993.

Greg Todd of the GMO Labeling squad reported on the committee's successful efforts to identify, clarify and label non-GMO products on the Coop's shelves. He described how the Big Carrot Coop in Toronto has prioritized eliminating GMO products from its shelves. It is a worker-owned operation with \$30 million in sales and 20,000 shoppers. Matt Kleinman, IT Coordinator and member of the website

redesign group, reported on progress with the new website and the survey, which is available to all Coop members through our website and in paper form at the door. Matt reported that, of 639 respondents so far, 89% found the improved shift swap function on the website "valuable" or "extremely valuable."

*Allen Zimmerman asked if members would be interested in meeting Amy Hepworth of Hepworth Farms—the supplier of more than 50% of our local produce—to discuss the future of farming in the Hudson Valley, and received an overwhelming show of hands in support.*

### New Squad Proposal

The first agenda item was a discussion of a proposal to launch a new squad to deal with international trade agreements. Presented by longtime Coop member Susan Metz, the Fair Trade Education squad, would take on the task of keeping Coop members informed about new international trade negotiations that may impact our food sources. Susan said that it is believed our government is currently preparing new international treaties that will deregulate government oversight of foods moving across borders. The two

pieces of trade agreements—the North American Trade and Investment Partnership and the Trans-Pacific Partnership—will lower food safety standards, opening the doors for substandard meat products, genetically modified and contaminated foods to flood American shelves. According to flyers distributed at the meeting, the trade acts are being drafted by corporations and "fast-tracked" by the President, so that they will become law without the review or input of legislators. Susan's proposal called for a new squad, a committee that would educate Coop members by posting articles on the Coop website, reporting at GMs, organizing discussions in the meeting room and providing analysis in the *Gazette*.

Ben Sacks, a Receiving Squad Leader, asked if the committee could consider a new name and widen its mandate to include a range of issues around Fair Trade, including working conditions on local farms. Ellen Freudenheim, a cart walker and Coop member since 1987, remembered that when she first joined, all squad work was directly connected to the food at the Coop, and asked how many squads now exist that are information/education squads. A member from Food Processing, stated, "Just as I depend on fellow members to shelve the food I buy, I also depend on members to do research and educate us. These huge trade agreements are impacting the food we eat. I think this is important. With the size of our membership we can afford to spend the needed work hours on this issue."

Susan agreed with some members who expressed confusion about the issue. "It sounds alarming, because it is alarming," she said. "The major media isn't covering it. It's being kept secret—and corporations are making laws that supersede legislative laws." Susan expressed openness to renaming the committee, and invited members to join the discussion on how to shape a proposal to establish this committee, to be brought back to a GM for a vote.

### Hearing Administration Committee Election

Robert Matson, a member of the Hearing Administration Committee (HAC), explained the responsibilities of this squad, which is part of the Coop's disciplinary hearing process. When a Coop member is called before the Disciplinary Committee, it is the responsibility of the HAC to organize the hearing—including reserving space at the Coop, setting a date and time for the meeting; organizing meeting participants, including the Disciplinary Committee members; recruiting Coop members to sit on the jury and ensuring the meeting is private, organized, respectful and fair. As Robert pointed out, the GM voted a few months before to expand the number of committee members to eight. HAC members must be nominated and approved by the GM for three-year terms. Robert brought forth the nomination of Robin Germany, a Coop member who was not in attendance at the meeting.

*The mass of attendees who started for the doors...were quickly pulled back in by a question and answer session regarding how the GM agenda is managed.*

One member asked: "What was the process for finding the candidate?" Robert answered that there was an advertisement run in the *Linewaiters' Gazette*, followed by an interview with the HAC squad leader. Others expressed concern that the nominee couldn't make

it to the GM for her nomination. But in the end, the attending members voted overwhelmingly in favor of electing Robin for the HAC for a three-year term.

### Tabling the Eden Foods Debate

A third agenda item was a discussion of Eden Foods, a supplier of some 70 products currently on the Coop shelves. Eden Foods has sued in federal court to be exempt from the provision in the Affordable Care Act that requires mandatory contraceptive health care for female employees. The two-part resolution the presenter sought would ask the Coop to not carry their products until Eden Foods changes their policies; and to form a committee to contact other retailers and form a coalition to address and publicize the issue. Since the presenter had called just before the meeting to cancel, the attendees voted not to discuss it, so the agenda item was postponed. (Update: The discussion has since been put on the agenda for the August 26 GM.)

The mass of attendees who started for the doors, thinking they were going home early, were quickly pulled back in by a question and answer session regarding how the GM agenda is managed. Members rose to the microphone, iPhones in hand, to quote from *Robert's Rules of Order*. Others felt that the issue should have been explored regardless of the presenter. The GM closed with a motion to re-open the discussion, which would have led to an extension of the meeting beyond 9:30 p.m.; the members voted against this motion. ■



ILLUSTRATION BY DEBORAH TINT

**The Coop is  
redesigning its website,  
and you're a part of it.**



**Please take our  
2-minute survey:  
Go to [new.foodcoop.com](http://new.foodcoop.com)**

PAPER SURVEYS ARE AVAILABLE AT THE ENTRANCE DESK

## Upgrades

CONTINUED FROM PAGE 1

inator Joe Holtz told the *Linewaiters' Gazette*, since repeated surveys and inspections over time have found no structural problems. But it's an old wall—the building it helps enclose was once a stable—and in building department terms it is also, technically, a “party wall,” one that's shared with another building. But that was also long ago. Now instead it looks onto the playground of the St. Francis Xavier School. And out of an abundance of caution, the Coop has engaged workers who are renewing the pointing, the external part of the mortar between the bricks. Weathering and aging can cause gaps and chips in the mortar, and when water gets into those exposed cracks and crevices and freezes and thaws, it can weaken the wall. As part of the construction, the parapets and railing are also being replaced.

The surveys of the wall brought to light some other issues, including water damage on the roof and a small but visible-to-the-naked-eye crack in the “northern” wall (on the side of the Coop facing Union Street, just above the westernmost exit door). Both of these issues will be addressed.

A trip to the roof with Joe to see the work on the wall and parapets revealed the hidden infrastructure upon which all we do down below depends. The old roof supports an array of huge refrigeration units with giant vertical panels around them to muffle their sound, a web of tubing and pipes and narrow walkways, and heavy steel beams resting on the parapets to safely hold and redistribute the weight of these twentieth-century appurtenances—all of it invisible to the shopper down below getting a blast of cool air as he opens a freezer door and ponders whether to get mint chip or coconut.

### The South Office

Sitting in the now empty south office awaiting renovation, a cheerful mural looks out from a piece of wall, a vestige of a previous incarnation of this small but important space. Here, one can distinctly feel the “slope” in Park Slope: a

four-inch differential in the level of the floor from one side of the room to the other. It was a feature, caused by settling of the building that caused the office workers to roll toward one end of the room when they would rather have stayed put at their workstations. Although an assortment of carpets slowed this involuntary travel, what worked even better was taking the wheels off the chairs. The view out the dusty window, looking onto the aforementioned roof with its maze of steel and compressors, adds to the general feeling that an upgrade is in order.

Workers will level the floor, replace the old ceiling tiles, paint the walls, replace windows and cover the new office floor in marmoleum. A green product made from linseed oil and used elsewhere in the building, marmoleum can be easily cleaned with soap and water, without the use of chemical cleansers. Environmentally friendly desks will also be built and installed. Currently slated to move back into the south office when renovations are complete are Receiving Coordinators, including the cheese, vitamin and bulk buyers, as well as a General Coordinator and a bookkeeper. Meanwhile, the staff are camped out in the meeting room, which will not be available for events or orientations during the work.

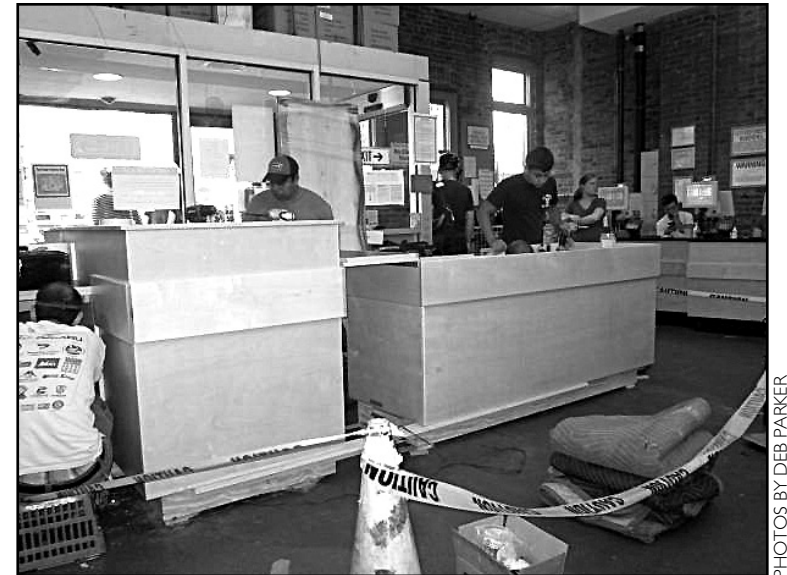
In all, with places for member as well as staff workers, the number of workspaces will increase from ten to 12 or 13. The Coop has worked with two members, designer Sara Matthews on the desk layout, as well as architect, James Cleary. Once begun the Coop is currently looking for a contractor who will hopefully also work on Saturdays to speed up the work. The work should take four to five weeks, and is expected to be complete by mid-September.

### Front End Redesign

The checkout area of the Coop has been studied and mapped and thought about and restudied perhaps as much as any square of earth in the whole metropolis, in order to find ways to speed traffic flow. The latest iteration of the front end involves several prototype checkout counters, while

the design team settles on a their final placement and configuration. A member of that team, architect Jennifer Nobis, spoke to the *Gazette* about the ongoing work. Jennifer has herself done shifts at the entrance desk to observe firsthand how to tweak the design for optimum efficiency.

One aspect of the redesign is already in place—the new express lanes, which have increased in number from four to five. A welcome feature to anyone using express is the second slot for packing your groceries. No longer do you



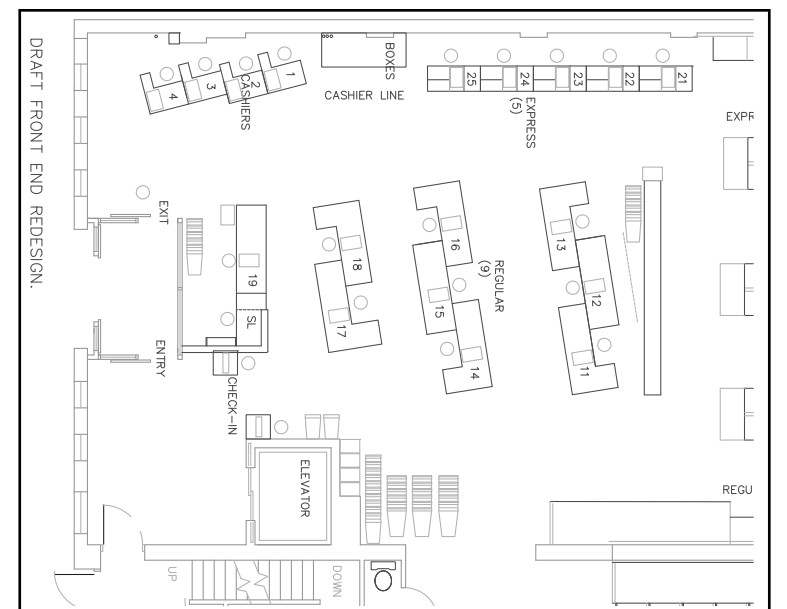
PHOTOS BY DEB PARKER

Prototype of new squad leader desk and checkout #16 was installed in July.



have to choose whether you want to use the little cutout for unloading your shopping cart or packing your bag, since the new counters have a neat little slot that perfectly accommodates a small green shopping basket. Eliminated also is the extra step of unloading your purchases on the counter. You hoist up your basket, the checkout worker unloads it as she scans and weighs, while you simultaneously pack things up at the other slot. Good design! Observers agree the express line is moving along at a brisk new pace, even though not all the stations are staffed at all times.

Another improvement at the front end, speeding the flow into the store are the new card swipes, which are far more sensitive than the old ones. This reporter's faded old card used to require two or three swipes while I stood there puzzling over what I might have done to mess up my status. But now the card reads instantly, the solid beep followed just as quickly by the entrance worker's open sesame—“Active!”



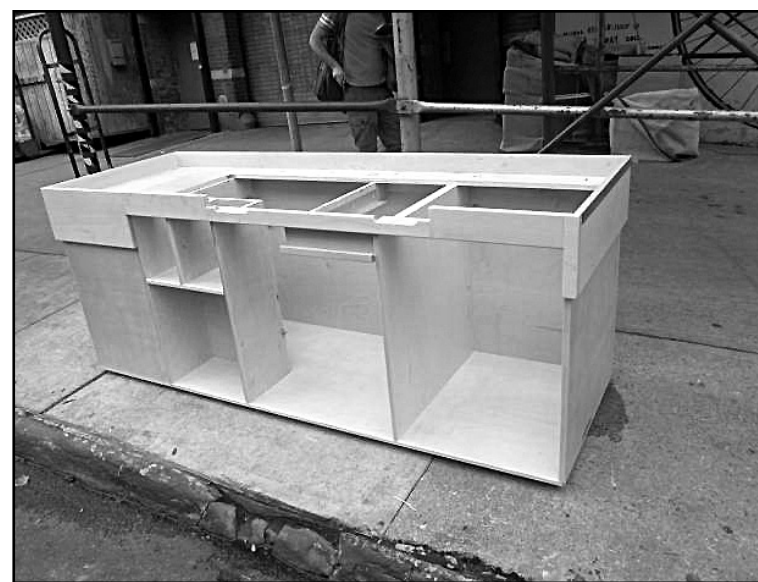
Draft of front end redesign includes two triplet-style checkout stations.

The redesign of the regular checkout counters will also allow for several “triplets,” to replace the long counters that currently have only two paired checkout stations, one facing in each direction. The triplets (checkout stations 11, 12 and 13, and 14, 15, and 16 in the graphic above) will each have two stations facing one way, and one facing the other, and will bring the number of regular stations to nine. Shoppers will have

slightly less room for packing up their groceries, but studies so far suggest it will be adequate. In fact, the old space seemed overly generous, given how valuable real estate in that part of the store is.

Shoppers will also notice that the checkout stations will be angled toward the door, another strategy for speeding traffic, along with the newly implemented capacity to weigh items at the cashier. ■

# Coop Getting Three Upgrades This Summer



PHOTOS BY DEB PARKER



**Five newly re-designed express lanes were installed over three days in late July.**



## Looking to help new coops form in Brooklyn while getting a tax deduction?

Support the Fund for New Coops—a project of the Park Slope Food Coop.

### THE FUND FOR NEW FOOD COOPS

a Project of the Park Slope Food Coop

The Fund for New Coops will make low-interest loans to start-up coops that use the full-member labor model like ours. Loans will be extended to qualified start-ups to address problems and maximize the chances that start-ups will flourish.

### How can you donate?

- Use the scannable Fund for New Coops donation cards available on the shopping floor
- Donate directly from the Coop's website, [foodcoop.com](http://foodcoop.com). Follow the link for the Fund for New Coops and select the DONATE button
- Mail a check—made out to the Fund for New Food Coops—to:  
FJC, 520 Eighth Ave., 20th Flr., New York, NY 10018

Help nascent coops that want to use our model: Contribute today!

## MEMBER SUBMISSION

## People's Climate March, September 21 (Fossil Fuel Divest/Re-Investment Meeting, September 30)

By Devin Judge-Lord

Climate change is frustrating because no matter how much we do locally, we also need national and global action, and our leaders are failing us. Luckily, as New Yorkers, we have a unique opportunity for local action to impact global politics. World leaders are meeting here at the United Nations to discuss a new potential climate treaty the week of September 22. The weekend before, on Sunday, September 21, thousands of people, including students, parents, marching bands, unions, farmers, artists, faith groups, communities affected by Superstorm Sandy and food justice communities like the Coop are joining together in the largest climate march in history!

Climate change is a justice issue because its burdens are unequal. While we may face higher food prices and increased frequency of Sandy-like storms because of climate change, millions face food insecurity and being displaced from their homes. In the past, when leaders have failed to act on the side of justice, we the people, have changed their minds by peacefully taking to the streets. In fact, every successful social movement in history has involved people taking to the streets. It is time to do something big. This is the moment where we change the political calculus on climate action.

And it is going to be fun! There will be music and

puppets and floats. Parents and kids will be marching demanding a better future. People of every faith will be flying their banners. Busloads of people are coming in from around the country and around the world for this historic event, and we, as New Yorkers, have a special duty to represent the people who can't afford to travel to NYC on September 21. We need to show world leaders that this really matters. We need to show up and be heard.

So pencil in a day of fun in the streets on your calendar right now! Sign up and get more information about the September 21 People's Climate March at [PeoplesClimate.org](http://PeoplesClimate.org).

If you want to help out beforehand, opportunities to help artists who need help making signs, people coming from out of town looking for places to stay, and much more can be found at [PeoplesClimate.org/organizing](http://PeoplesClimate.org/organizing).

But wait! On September 30, there will be a meeting at the Coop about another thing New Yorkers can do about climate change.

We are stuck in a system where living a normal life means creating an unsustainable amount of pollution. Solutions abound, but powerful fossil interests make them very difficult and only accessible to those of us with extra time and resources to go against the grain. It does not make any

sense for New York to invest in those companies that perpetuate this oppressive fossil fuel system.

With one of the largest municipal pension funds in the world, New Yorkers again have a unique opportunity for local action. The City Council will be voting on a resolution of support for a process that pulls city funds out of fossil fuel companies and re-invests them in a greener New York—creating jobs and making New York City more resilient to Sandy-like storms. Additionally, when actions like the People's Climate March work and greenhouse gasses are controlled, fossil fuel companies will lose much of their value. We will be dis-

cussing how those of us at the Coop can help at 7 p.m. on September 30 upstairs in the meeting room. For more information, contact [Devin.JL@gmail.com](mailto:Devin.JL@gmail.com). Hope to see you there! ■



### VALET BIKE PARKING IS HERE ON SATURDAYS & SUNDAYS!

*strollers & scooters  
& carts too!*



**Every Saturday,  
April 5–November 22,  
1:00–5:15 p.m.  
and  
Every Sunday,  
April 6–November 23,  
3:30–7:45 p.m.**

Coop members can leave their bikes with our valet parking service, which is like a coat check for bikes. Working members will check in and watch your bike for you.

Just drop off your bike, stroller, scooter or personal cart, do your shopping or your shift, and hop back on.

No locks, no worries, no theft.

Service operates rain or shine.

Look for us in front of the yellow wall.

**Note: no bike check-in on  
Saturdays after 5 p.m. or  
Sundays after 7:30 p.m.**

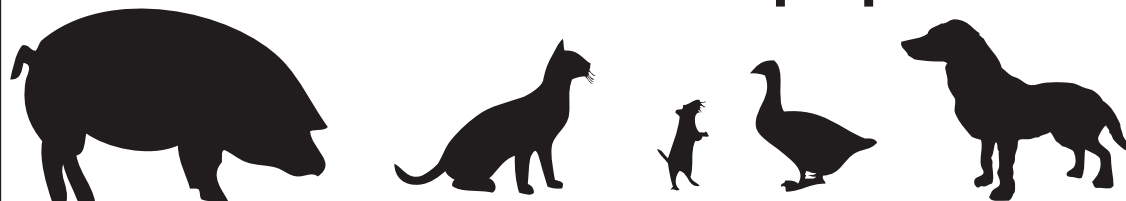
Valet bicycle parking at the Coop  
is brought to you by the PSFC  
Shop & Cycle Committee.



**PSFC  
Shop & Cycle  
Committee**

Did you ever wonder exactly what those humane claims on product labels at the Coop mean? Or want to confirm which items we carry are not tested on animals?

**The Animal Welfare Committee  
provides transparent animal welfare  
information about the Coop's products.**



We work with staff, the Coop's vendors and external research resources to provide species- and issue-specific information for YOU, the Coop member. You can find us online at our blog and twitter account and you can find our guides all around the Coop, next to their relevant products!

**Find us here!**

**Blog: [www.psfcanimals.blogspot.com](http://www.psfcanimals.blogspot.com)**

**Twitter: [@psfcanimals](https://twitter.com/psfcanimals)**

Current Guides:

Eggs (next to egg case)

Milk (next to milk case)

Animal Testing

(aisle 5, closest to the back of the aisle)





COOP HOURS

Office Hours:

Monday through Thursday  
8:00 a.m. to 9:00 p.m.  
Friday & Saturday  
8:00 a.m. to 5:00 p.m.

Shopping Hours:

Monday–Friday  
8:00 a.m. to 10:00\* p.m.  
Saturday  
6:00 a.m. to 10:00\* p.m.  
Sunday  
6:00 a.m. to 7:30\* p.m.

\*Shoppers must be on a checkout line  
15 minutes after closing time.

Childcare Hours:

Monday through Sunday  
8:00 a.m. to 8:45 p.m.

Telephone:

718-622-0560

Web address:

www.foodcoop.com

LINEWAITERS' GAZETTE

The *Linewaiters' Gazette* is published biweekly by the Park Slope Food Coop, Inc., 782 Union Street, Brooklyn, New York 11215.

Opinions expressed here may be solely the views of the writer. The *Gazette* will not knowingly publish articles that are racist, sexist, or otherwise discriminatory.

The *Gazette* welcomes Coop-related articles, and letters from members.

SUBMISSION GUIDELINES

All submissions must include author's name and phone number and conform to the following guidelines. Editors will reject letters and articles that are illegible or too long. Submission deadlines appear in the Coop Calendar opposite.

**Letters:** Maximum 500 words. All letters will be printed if they conform to the guidelines above. The Anonymity and Fairness policies appear on the letters page in most issues.

**Voluntary Articles:** Maximum 750 words. Editors will reject articles that are essentially just advertisements for member businesses and services.

**Committee Reports:** Maximum 1,000 words.

**Editor-Writer Guidelines:** Except for letters to the editor, which are published without editing but are subject to the *Gazette* letters policy regarding length, anonymity, respect, and fairness, all submissions to the *Linewaiters' Gazette* will be reviewed and if necessary edited by the editor. In their review, editors are guided by the *Gazette's* Fairness and Anonymity policies as well as standard editorial practices of grammatical review, separation of fact from opinion, attribution of factual statements, and rudimentary fact checking. Writers are responsible for the factual content of their stories. Editors must make a reasonable effort to contact and communicate with writers regarding any proposed editorial changes. Writers must make a reasonable effort to respond to and be available to editors to confer about their articles. If there is no response after a reasonable effort to contact the writer, an editor, at her or his discretion, may make editorial changes to a submission without conferring with the writer.

**Submissions on Paper:** Typed or very legibly handwritten and placed in the wallpocket labeled "Editor" on the second floor at the base of the ramp.

**Digital Submissions:** We welcome digital submissions. Drop disks in the wallpocket described above. The email address for submissions is [GazetteSubmissions@psfc.coop](mailto:GazetteSubmissions@psfc.coop). Receipt of your submissions will be acknowledged on the deadline day.

**Classified & Display Ads:** Ads may only be placed by and on behalf of Coop members. Classified ads are prepaid at \$15 per insertion, business card ads at \$30. (Ads in the "Merchandise–Non-commercial" category are free.) All ads must be written on a submission form (available in a wallpocket on the first floor near the elevator). Classified ads may be up to 315 characters and spaces. Display ads must be camera-ready and business card size (2"x3.5").

Printed by: Tri-Star Offset, Maspeth, NY.

SUMMERTIME  
DON'T FORGET YOUR COOP SHIFT!



If you plan on being away during one of your workslots, please make arrangements to have your shift covered.

One way to do it is to use the Shift Swap at [www.foodcoop.com](http://www.foodcoop.com)!

If you plan on being away for eight weeks or more, contact the Membership Office to take a leave of absence.

YOUR CO-WORKERS WILL LOVE YOU FOR IT!

RETURN POLICY



The Coop strives to keep prices low for our membership. Minimizing the amount of returned merchandise is one way we do this. If you need to make a return, please go to the 2nd Floor Service Desk.

REQUIRED FOR ANY RETURN

1. The Paid-In-Full receipt MUST be presented.
2. Returns must be handled within 30 days of purchase.

CAN I EXCHANGE MY ITEM?

No, we do not "exchange" items. You must return the merchandise and re-purchase what you need.

CAN I RETURN MY ITEM?

Produce\* Bulk\* (incl. Coop-bagged bulk)  
Cheese\* Seasonal Holiday Items  
Books Special Orders  
Calendars Refrigerated Supplements  
Juicers & Oils  
Sushi \*A buyer is available during the week-days to discuss your concerns.

NEVER  
RETURNABLE

Refrigerated Goods (not listed above)  
Frozen Goods  
Meat & Fish  
Bread

RETURNABLE  
ONLY IF SPOILED  
BEFORE  
EXPIRATION DATE  
Packaging/label  
must be present-  
ed for refund.

Items not listed above that are unopened  
and unused in re-sellable condition

RETURNABLE

The Coop reserves the right to refuse returns on a case-by-case basis. If you have questions, please contact a staff member in the Membership Office.

This Issue Prepared By:

Coordinating Editors: Stephanie Golden  
Erik Lewis

Editors (development): Erik Lewis  
Joan Minieri

Reporters: Frank Haberle  
Ed Levy  
Alison Rose Levy

Art Director (development): Eva Schicker

Illustrators: Lynn Bernstein  
Ethan Pettit  
Deborah Tint

Photographer: Rod Morrison

Thumbnails: Mia Tran

Photoshop: Terrance Carney

Quark: Helena Boskovic

Art Director (production): Lynn Cole

Desktop Publishing: Kevin Cashman  
Diana Quick  
Oliver Yourke

Editor (production): Regina Mahone

Puzzle Master: Stuart Marquis

Final Proofreader: Lisa Schorr

Index: Len Neufeld

Advertisement: Eric Bishop



WELCOME!

A warm welcome to these new Coop members who have joined us in the last two weeks. We're glad you've decided to be a part of our community.

Andrew Ahern	Nicolas Fernandez	Nairi Kasparian	Benjamin Salesse
Jacqueline Ahern	Jenna Fishner	Ella Kim	Stephan Schwartz
Laura Bethell	Julianna Fiss	Janice Kinzer	Nicole Sherrick
Lisa Cannistraci	Vivian Francis	Diana Kong-Wasielewski	Erica Soehngen
Catia Chien	Brice Gaillard	Puichun Li	Michael Spada
Jeffrey Clark	Elizabeth Gollnick	Rocío Lorca	Rachel Stein
LeAnna Click	Rodrigo Gonzalez Serrano	Jennifer Lovallo	Caitlin Rose Sweet
Douglas Concha	Simone Hannah-Clark	Michelle Maziar	Laureen Toiba
Morgan Cornwell	Emma Hoffman	Sivasailam Muthiah	Erika Van Gundy
Brian Cronin	Hannah Hoyt	Julia Novack	Nathan Voirol
Millie David	Jasmine Hyman	Maho Oida	Abby Welter
Miwa Divens-Cogez	Flavia Jackson	Jasmin Oppenheimer	Mindy Willing
Mallory Easton	Elise Job	Mile Pietoso	
Alan Faiola	Romain Job	Hannah Pinski	



ILLUSTRATION BY ETHAN PETTIT

COOP CALENDAR

New Member Orientations

Attending an Orientation is the first step toward Coop membership. Pre-registration is required for all of the three weekly New Member Orientations. To pre-register, visit [foodcoop.com](http://foodcoop.com) or contact the Membership Office. Visit in person or call 718-622-0560 during office hours.

Have questions about Orientation? Please visit [www.foodcoop.com](http://www.foodcoop.com) and look at the "Join the Coop" page for answers to frequently asked questions.

The Coop on the Internet  
[www.foodcoop.com](http://www.foodcoop.com)

The Coop on Cable TV  
*Inside the Park Slope Food Coop*

FRIDAYS 11 a.m. and 5 p.m. Channels: 56 (Time-Warner), 69 (CableVision), 84 (RCN), 44 (Verizon), and live streaming on the Web: [www.bricartsmedia.org/community-media/bcat-tv-network](http://www.bricartsmedia.org/community-media/bcat-tv-network).

General Meeting Info

**TUE, AUGUST 26**  
GENERAL MEETING: 7:00 p.m.

**TUE, SEPTEMBER 2**  
AGENDA SUBMISSIONS: 8:00 p.m.  
Submissions will be considered for the September 30 General Meeting.

Gazette Deadlines

**LETTERS & VOLUNTARY ARTICLES:**  
Sept. 4 issue: 12:00 p.m., Mon, August 25  
Sept. 18 issue: 12:00 p.m., Mon, September 8

**CLASSIFIED ADS DEADLINE:**  
Sept. 4 issue: 7:00 p.m., Wed, August 27  
Sept. 18 issue: 7:00 p.m., Wed, September 10

ALL ABOUT THE  
GENERAL MEETING

Our Governing Structure

From our inception in 1973 to the present, the open monthly General Meetings have been at the center of the Coop's decision-making process. Since the Coop incorporated in 1977, we have been legally required to have a Board of Directors. The Coop continued the tradition of General Meetings by requiring the Board to have open meetings and to receive the advice of the members at General Meetings. The Board of Directors, which is required to act legally and responsibly, has approved almost every General Meeting decision at the end of every General Meeting. Board members are elected at the Annual Meeting in June. Copies of the Coop's bylaws are available at the Coop Community Corner and at every General Meeting.

Next Meeting: Tuesday,  
August 26, 7:00 p.m.

The General Meeting is held on the last Tuesday of each month.

Location

MS 51, 350 Fifth Ave., between Fourth and Fifth Sts. Enter on Fourth St. cul-de-sac. Fourth St. entrance is handicap-accessible.

How to Place an Item  
on the Agenda

If you have something you'd like discussed at a General Meeting, please complete a submission form for the Agenda Committee. Forms are available in the rack near the Coop Community Corner bulletin board and at General Meetings. Instructions and helpful information on how to submit an item appear on the submission form. The Agenda Committee meets on the first Tuesday of each month to plan the agenda for the GM held on the last Tuesday of the month. If you have a question, please call Ann Herpel at the coop.

Meeting Format

**Warm Up (7:00 p.m.)** • Meet the Coordinators  
• Enjoy some Coop snacks • Submit Open Forum items  
• Explore meeting literature  
**Open Forum (7:15 p.m.)** Open Forum is a time for members to bring brief items to the General Meeting. If an item is more than brief, it can be submitted to the Agenda Committee as an item for a future GM.  
**Reports (7:30 p.m.)** • Financial Report • Coordinators' Report • Committee Reports  
**Agenda (8:00 p.m.)**  
The agenda is posted at the Coop Community Corner and may also appear elsewhere in this issue.  
**Wrap Up (9:30-9:45)** (unless there is a vote to extend the meeting) • Meeting evaluation • Board of Directors vote • Announcements, etc.

Attend a GM  
and Receive Work Credit

Since the Coop's inception in 1973, the General Meeting has been our decision-making body. At the General Meeting (GM) members gather to make decisions and set Coop policy. The General-Meeting-for-workslot-credit program was created to increase participation in the Coop's decision-making process.

Following is an outline of the program. *For full details, see the instruction sheets by the sign-up board.*

- **Advance Sign-up required:**  
To be eligible for workslot credit, you must add your name to the sign-up sheet in the elevator lobby. The sign-ups sheet is available all month long, except for the day of the meeting when you have until 5 p.m. to sign up. On the day of the meeting, the sign-up sheet is kept in the Membership Office.  
Some restrictions to this program do apply. Please see below for details.
- **Two GM attendance credits per year:**  
Each member may take advantage of the GM-for-workslot-credit program two times per calendar year.
- **Certain Squads not eligible:**  
Eligible: Shopping, Receiving/Stocking, Food Processing, Office, Maintenance, Inventory, Construction, and FTOP committees. (Some Committees are omitted because covering absent members is too difficult.)
- **Attend the entire GM:**  
In order to earn workslot credit you must be present for the *entire* meeting.
- **Signing in at the Meeting:**  
After the meeting the Chair will provide the Workslot Credit Attendance Sheet.
- **Being Absent from the GM:**  
It is possible to cancel without penalty. We do ask that you remove your name if you know cannot attend. Please do not call the Membership Office with GM cancellations.

Park Slope Food Coop  
Mission Statement

**The Park Slope Food Coop is a member-owned and operated food store—an alternative to commercial profit-oriented business.** As members, we contribute our labor: working together builds trust through cooperation and teamwork and enables us to keep prices as low as possible within the context of our values and principles. Only members may shop, and we share responsibilities and benefits equally. We strive to be a responsible and ethical employer and neighbor. We are a buying agent for our members and not a selling agent for any industry. We are a part of and support the cooperative movement. **We offer a diversity of products with an emphasis on organic, minimally processed and healthful foods.** We seek to avoid products that depend on the exploitation of others. We support non-toxic, sustainable agriculture. **We respect the environment.** We strive to reduce the impact of our lifestyles on the world we share with other species and future generations. We prefer to buy from local, earth-friendly producers. We recycle. We try to lead by example, educating ourselves and others about health and nutrition, cooperation and the environment. **We are committed to diversity and equality.** We oppose discrimination in any form. We strive to make the Coop welcoming and accessible to all and to respect the opinions, needs and concerns of every member.

## MEMBER SUBMISSION

## Some Thoughts on the Retirement Policy Controversy

By David Laibman

**T**aigi Smith's article on our retirement policy project is thoughtful and balanced (*Gazette*, July 10). I would like to continue the discussion. There are two main points.

First, in view of the range of opinions concerning retirement policy, I must stress that our group is asking the GM only to authorize a study of the Coop membership, to determine what would be the impact of any retirement policy—including the one currently in effect—on the Coop's labor supply. Without actual facts about the age distribution of the membership, any proposal—including support of the status quo—is simply shooting in the dark. One would think this is utterly non-controversial, and that our

proposal for a study would have instantaneous and unanimous support.

Remarkably, it seems that is not the case. Joe Holtz thinks, "We've been doing just fine without demographic data," and that this is "really cool"; "we don't nosy into people's lives." Really? A study would of course acquire data on members' ages anonymously; no links to member names or numbers would be stored, so nothing "nosy" is being proposed. But the real issue here lies deeper. Is Holtz saying that no knowledge is better

than some knowledge? That ignorance is better than science?

Interestingly, some long-timers and GCs have been arguing against any possible retirement-friendly proposals, that there are already shortages of work for the various shifts. You can't have it both ways. If there are labor-supply problems, then we need a study! We're not "doing just fine without data."

Second, although we are at the preliminary study stage and no proposals for change are now on the floor, ideas about retirement policy for the Coop are everywhere; people have strong feelings about what is fair, and what is not. So, the question is posed: what is "fair"?

**Voice 1:** Individuals make a

recurring deal: one work shift in exchange for four weeks of shopping. Period. "If they can shop, they can work." Anything else would not be—fair! There should be no retirement policy at all.

This view basically sees us as mere "individuals," piecemeal sellers of labor. If held consistently, it would abolish disability policy also. "If they can shop, they can work." If they can't, put them off onto an ice floe and send them out to sea.

**Voice 2:** Retirement should be based on years of work alone. If I joined the Coop at 20, and you joined at 45, why should you work 20 years while I have to work 40? It's not—fair! The policy should be: 20 years and out; age should not matter at all. (This view is not hypothetical; it is represented in our group.)

**Voice 3:** Retirement should be based on age alone. Everyone reaches retirement eligibility at (say) 65. For you to retire at 40 (just because you started when you were younger) while I have to work until I'm 70 is not—fair! (This one is hypothetical; I'm not aware of anyone who supports it.)

**Voice 4:** Retirement should take into account both years of work and age. The current policy is in this category. So is the proposal that many of us sup-

port—but more about that once we have the results of the study, and various policies can be properly evaluated.

This gets to the heart of the matter. There is no easy way to define what is "fair." The interests of all members must be addressed, and no simple formula accomplishes this to everyone's complete satisfaction. That includes the needs, not addressed under the current policy, of those who joined the Coop at a relatively mature age, and must therefore work into their 70s and 80s.

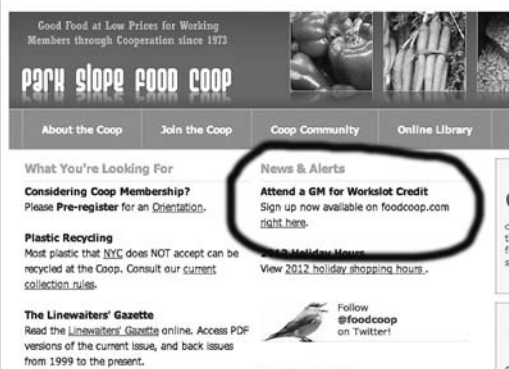
The idea that any of us wants to "tinker" with retirement policy, or make "drastic changes," without regard to the needs of the Coop, is baseless. I fully support the PSFC principle that the work requirement is essential to who we are. That said, we are a cooperative of real human beings, with differing circumstances; age and years of service are both important; retirement eligibility is not the same as disability, and both are valid reasons for removing the work requirement for individuals who qualify. And, finally, a systematic study is needed to determine what retirement policy the Coop should pursue, consistent with both the needs of its members and the needs of the Coop for work contributions. ■



Please protect your feet and toes while working your shift at the Coop by not wearing sandals or other open-toed footwear.

Thanks for your cooperation,  
The Park Slope Food Coop

To receive workslot credit for attending the monthly General Meeting, members must sign up in advance in one of the following three ways:



◆ On the Coop's website ([www.foodcoop.com](http://www.foodcoop.com))

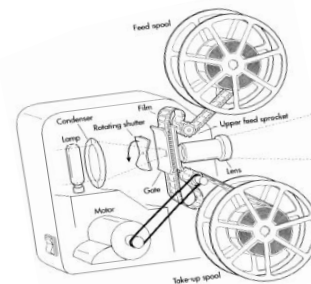
◆ Add your name to the sign-up sheet in the ground floor elevator lobby



◆ Call the Membership Office

## ARE YOU A BROOKLYN-BASED FILMMAKER?

Would you like to screen your work at the Coop?



Then submit your film for possible inclusion in the Coop's Friday Film Night Screening Series.

If you're a Coop member you'll receive one FTOP credit for screening and offering a Q+A with your film. If you're not a member, it's still a chance to spread the word about your work and build your fan base by screening for a local audience.

We accept documentary and fiction, both features and shorts (we program shorts as a group).

**Please e-mail Gabriel Rhodes for details at [gabrielrhodes@me.com](mailto:gabrielrhodes@me.com).**

park slope  
FOOD COOP

## calendar of events

aug 26  
tue 7 pm

## PSFC AUG General Meeting



Items will be taken up in the order given. Times in parentheses are suggestions. More information on each item may be available on the entrance table at the meeting. We ask members to please read the materials available between 7 and 7:15 p.m.

**Meeting location:** MS 51, 350 Fifth Ave., between Fourth and Fifth Sts.

**Enter on Fourth St. cul-de-sac. Fourth St. entrance is handicap-accessible.**

**I. Member Arrival and Meeting Warm-Up**

**II. Open Forum**

**III. Coordinator and Committee Reports**

**IV. Meeting Agenda**

**Item 1:** Eden Foods Discussion (30 minutes)

**Discussion:** What should be the Coop's response to Eden Foods? Boycott? Shelf Labels? A letter? Eden Foods, like Hobby Lobby, has sued Obamacare to restrict their employees' contraceptive healthcare. —submitted by Lisa Guido and Matthew Wills

**Item 2:** Election of Diversity and Equality Committee (30 minutes)

**Discussion:** To elect all members of the Diversity and Equality committee (DEC). Background on the Committee, procedures, etc will be presented as well.

—submitted by George Perlov, DEC

**Item 3:** Support for People's Climate March on Sept 21 (30 minutes)

**Discussion:** We endorse the People's Climate March and the Food Contingent of the March ([www.peoplesclimate.org](http://www.peoplesclimate.org)).

—submitted by Jessica Roff

**V. Board of Directors Meeting**

**VI. Wrap-Up.** Includes member sign-in for workslot credit.

For information on how to place an item on the Agenda, please see the center pages of the *Linewaiters' Gazette*. The Agenda Committee minutes and the status of pending agenda items are available in the Coop office.

sep 19  
fri 8 pmStephanie Rooker & Ben Tyree;  
Mamie Minch

Potently intelligent, pensively psychedelic, vocalist **Stephanie Rooker** draws her influences as deeply from conscious hip-hop as from jazz,

soul, and funk. She delivers songs of personal and societal empowerment with a voice that is at once evocative and healing. Guitarist **Ben Tyree** wields virtuosic ability, eclectic tastes, and the power to move people—either with a buoyant groove to get audiences out of their seats or with emotional depth to touch a listener's soul. Park Slope local singer and guitarist **Mamie Minch** sounds something like a well-fleshed-out 78-rpm record. She's known around town for her Piedmont-style fingerpicking chops, her big deep voice and her self-penned antique-sounding songs. She's played music all over the world and Brooklyn, with all kinds of excellent people, including Dayna Kurtz, the Roulette Sisters, Jimbo Mathis and CW Stoneking.

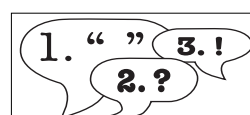
**Concert takes place at the Brooklyn Society for Ethical Culture, 53 Prospect Park West (at 2nd St.), \$10, doors open at 7:45. Prospect Concerts is a monthly musical fundraising partnership of the Coop and the Brooklyn Society for Ethical Culture.**

sep 27-28  
sat-sun 9 am-7 pmFood Drive to Benefit  
CHIPS Soup Kitchen

CHIPS Soup Kitchen, located at 4th Avenue and Sackett Street, is the recipient of much of our edible but unsaleable perishable food. They also need donations of nonperishable foods. This food will go to CHIPS to help them feed people in the neighborhood who are in need of a nutritious meal. Consider contributing nonperishable foods and commercially packaged foods; canned fish; canned fruits and vegetables; pasta sauce; pasta; pre-packaged rice; pre-packaged beans; canned beans; canned soups; Parmalat milk; dry milk; peanut butter; cooking oil; or boxed raisins. Give donations to the collection table outside the Coop.

sep 2  
tue 8 pm

## Agenda Committee Meeting



The Committee reviews pending agenda items and creates the agenda for this month's General Meeting. Drop by and talk with committee members face-to-face between 8:00 and 8:15 p.m. Before submitting an item, read "How to Develop an Agenda

Item for the General Meeting" and fill out the General Meeting Agenda Item Submission Form, both available from the Membership Office or at [foodcoop.com](http://foodcoop.com). **The next**

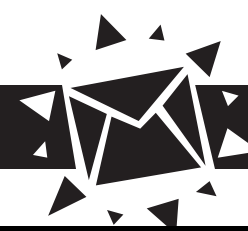
**General Meeting will be held on Tuesday, September 30, 7 p.m., at MS 51, 350 Fifth Ave., between Fourth and Fifth Sts.**

## still to come

**The Food Coop's  
second-floor meeting room  
will be unavailable for  
Coop events through early  
September, due to office  
renovations on that floor.**



## LETTERS TO THE EDITOR



### CALL TO ORGANIZE EDEN FOODS DISCUSSION

#### TO THE MEMBERSHIP:

At the July GM, the Eden Foods boycott proposer was a no-show. There are clearly many members who wanted this discussion, and who would have put it on the agenda themselves had it not already been there. Two of us showed up for the August agenda meeting, so it's back on for the GM Tuesday, August 26!

Where do we go now? Matthew Wills and I will present the Eden Foods boycott discussion at the August GM, but if you'd like to get more involved in advance of the meeting, contact me at lisaguido@gmail.com. We hope to put together a proposal for a vote at the September GM.

*In cooperation,  
Lisa Guido*

### KEEP EDEN FOODS

#### TO THE EDITOR:

I'm concerned about the negative opinions that have been recently posted in the *Gazette*, bashing the Eden Foods. I hope to be heard and hopefully more would join in to counter these criticisms which demand that Eden Food products would not be available at the Coop. I'm one of many observant Jewish members who rely on all kosher, OU products in the

Coop. Eden Foods is one of the better quality products that is also kosher and for me and many others its removal from the Coop stock would be an irreplaceable loss.

*Lea Cattan*

### FOUR COMMENTS ON JULY 29 GM

#### TO COOP MEMBERS:

1) Susan Metz is proposing to create Fair Trade Education Squad "to research, analyze, publish and disseminate reliable information" regarding the negotiations of trade agreements. In particular she mentions the Trans-Pacific Partnership (TPP) TransAtlantic Investment Partnership with the European Union (TTIP), although the proposal seems to have a more open-ended nature to it. Ms. Metz does not inform us how she intends to get "reliable information" about negotiations that she says are being conducted "in secret." She asserts we need to be aware of the contents of these trade agreements as they have the potential to adversely impact our food suppliers. I would urge caution as we move forward, to be sure that if such a committee is approved it will be providing genuinely verifiable information and not be a vehicle for the dissemination of propaganda.

2) The owner of Eden foods, Michael Potter, is seeking relief through the courts to be exempt from

the Affordable Care Act requirement to include contraceptives in his company's employee health care plan. While I don't agree with Potter's decision, it seems to me his exercise of his democratic right to seek redress through the legal system is not the kind of offense that warrants the ostracizing implied by a boycott. He is not "depriving employees of their 'Right to Choose,'" but questioning whether he should be compelled to pay for it.

On the other hand, the proponents of imposing a storewide boycott are trying to deny to us the privilege of choosing which products to buy. They are targeting a company that has been at the vanguard to the health foods movement. Through our Coop membership, we achieve significant savings on the Eden products, compared to buying them in a traditional retail establishment. This boycott proposal is ill-advised.

3) In the past, when a presenter failed to show up at the General Meeting, the item was removed from the agenda. Simple. No vote. This should have been the procedure at the GM; there should not have been a vote on tabling, and there should not have been the soul searching discussion about the tabling. Rules should be applied universally.

4) The sound system we are using is inadequate.

*Barbara Mazor*

### BDS TOPICS:

### THE DAHIYA DOCTRINE: ISRAEL'S MILITARY MANUAL FOR GAZA MASSACRE; BOYCOTT OF ISRAEL'S ACADEMIC INSTITUTIONS FOR THEIR COMPLICITY

#### MEMBERS:

This letter is based on the statement signed by over 100 Middle East scholars and librarians from around the world calling for the boycott of Israeli academic institutions.

"The on-going Israeli massacres in Gaza have been ghastly reminders of the complicity of Israeli academic institutions in the occupation and oppression of Palestinians. Tel Aviv University, the Hebrew University of Jerusalem, Bar Ilan University, Haifa University, Technion, and Ben Gurion University have publicly declared their unconditional support for the military. There are intimate connections between Israeli academic institutions and the military, security, and political establishments in Israel."

**The Dahiya Doctrine:** Tel Aviv University is directly implicated, through its Institute for National Security Studies, in developing the Dahiya Doctrine, adopted by the Israeli military in its assaults on Lebanon in 2006 and on Gaza today. **The Dahiya Doctrine advocates the extensive destruction of civilian infrastructure and "intense suffering" among the civilian population as an "effective" means to subdue any resistance.**

**Silence is complicity:** The latest humanitarian catastrophe caused by Israel's new military assault on Gaza is the third and most devastating in six years. World governments and mainstream media do not hold Israel accountable for its violations of international law. As a community of scholars engaged with the Middle East, we have a moral responsibility to do so.

**Israel has maintained an illegal siege on Gaza for seven years:** Israel has limited the movement of people and good in and out of Gaza, rationing Palestinian calorie intake at just above subsistence levels. Suffering of Palestinians under Israeli occupation extends beyond Gaza: the occupation and dispossession in East Jerusalem, the Negev and West Bank, construction of walls and fences around Palestinian people curtailing their freedom of movement and education, and house demolitions. All have long histories and no apparent end in sight. They will continue unless people around the world act where their governments have failed.

**Israel's recent assaults on Palestinian universities:** In the past two months Israeli forces raided Al Quds University (Jerusalem), the Arab American University (Jenin), Birzeit University (Ramallah), and aerial bombed the Islamic University of Gaza. Israel has a long history of confiscating Palestinian archives and the destruction of libraries and research centers.

**Israeli academics during the Gaza assault:** A few dozen have protested against their government. Several dozen Israeli academics signed a petition calling for an end to Israel's bombardment of Gaza. Alarming, they have faced disciplinary measures from their own universities.

**A call to our colleagues in Middle East Studies to boycott Israeli academic institutions:** Following a growing number of U.S. academic associations, we pledge not to collaborate on projects and events, to teach at or attend conferences with such institutions, not to publish in academic journals based in Israel until such time these institutions end their complicity in violating Palestinian rights as stipulated in international law...

Source: [www.mondoweiss.net/2014/08/scholars-librarians-institutions.html](http://www.mondoweiss.net/2014/08/scholars-librarians-institutions.html)

*Mary Buchwald  
BrooklynForPeace.org  
PSFC members for BDS  
[www.psfcbds.wordpress.com](http://www.psfcbds.wordpress.com)*

## LETTERS POLICY

We welcome letters from members. Submission deadlines appear in the Coop Calendar. All letters will be printed if they conform to the published guidelines. We will not knowingly publish articles which are racist, sexist or otherwise discriminatory.

The maximum length for letters is 500 words. Letters must include your name and phone number and be typed or very legibly handwritten. Editors will reject letters that are illegible or too long.

You may submit on paper, typed or very legibly handwritten, or via email to [GazetteSubmissions@psfc.coop](mailto:GazetteSubmissions@psfc.coop) or on disk.

#### Anonymity

Unattributed letters will not be published unless the *Gazette* knows the identity of the writer, and therefore must be signed when submitted (giving phone number). Such letters will be published only where a reason is given to the editor as to why public identification of the writer would impose an unfair burden of embarrassment or difficulty. Such letters must relate to Coop issues and avoid any non-constructive, non-cooperative language.

#### Fairness

In order to provide fair, comprehensive, factual coverage:

1. The *Gazette* will not publish hearsay—that is, allegations not based on the author's first-hand observation.
2. Nor will we publish accusations that are not specific or are not substantiated by factual assertions.

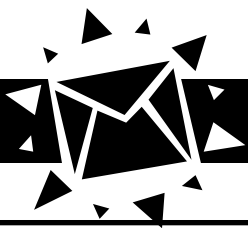
3. Copies of submissions that make substantive accusations against specific individuals will be given to those persons to enable them to write a response, and both submissions and response will be published simultaneously. This means that the original submission may not appear until the issue after the one for which it was submitted.

The above applies to both articles and letters. The only exceptions will be articles by *Gazette* reporters which will be required to include the response within the article itself.

#### Respect

Letters must not be personally derogatory or insulting, even when strongly criticizing an individual member's actions. Letter writers must refer to other people with respect, refrain from calling someone by a nickname that the person never uses himself or herself, and refrain from comparing other people to odious figures like Hitler or Idi Amin.





## L E T T E R S T O T H E E D I T O R

MASSACRE IN  
GAZA CONTINUES

## TO THE MEMBERS,

As of today, August 10, 2014, the Israeli military, since July 8, 2014, has killed nearly 1,900 Palestinians in Gaza, including more than 400 children. The United Nations estimates more than 70% of those killed were civilians. The number of Israelis killed, almost all members of the Israeli military, is less than 70. Analyses of these figures are available on the websites of the *New York Times*, the British Broadcasting Corporation (BBC) and ABC News in the USA.

With advanced weapons, the Israeli military has destroyed hundreds of Palestinian homes and much of Gaza's infrastructure, including its water purification facilities and its only power plant. See the *New York Times* map of this destruction in its August 3 edition. Israel also bombed United Nations schools to which Palestinians had fled for shelter. See reports at the website [democracynow.org](http://democracynow.org) for more information about these particular bombings.

Apologists for Israeli actions, including the Obama Administration, (which recently sent more ammunition to Israel for weapons purchased with \$3 billion U.S. tax payers' money per year) justify these mass murders. You can read some of those justifications in the *Linewriters' Gazette*. Here you can also read accusations that those of us who criticize Israel are against Jews.

We understand that some Jews who support Israeli policies are Nazi Holocaust survivors and children of survivors. They believe that Israel would be their refuge from renewed anti-Jewish attacks elsewhere. They are frightened that Israel as a Jewish-dominated State might not be a viable entity.

But Judaism and Zionism should not be conflated. Judaism is a religious and ethnic identity. Zionism is a political ideology on which the establishment of the State of Israel is based. Not all Jews are Zionists. A growing number of Jews, particularly young Jews in the USA, oppose the Israeli occupa-

tion of Palestine and Jewish colonization of the West Bank, where more than 500,000 Israelis now live in Jewish-only settlements.

The conflict between Palestinians and Israelis began more than a century ago. Information about that history is available in books like "Righteous Victims" by Benny Morris, "The Ethnic Cleansing of Palestine" by Ilan Pappé and "Understanding the Palestinian-Israeli Conflict: A Primer" by Phyllis Bennis.

The persecution of Palestinians will continue until Israel ends the occupation of the West Bank and Gaza. Palestinian resistance to occupation and colonization will also continue.

What do these issues have to do with the Park Slope Food Coop? In 2005, more than 160 Palestinian civil society organizations called for non-violent resistance, Boycott, Divestment and Sanctions (BDS), against Israel. We can support BDS by boycotting Israeli products at the Coop, as we boycott other products which support oppressive corporations and regimes. The Sodastream water carbonation system, produced in the occupied West Bank with exploited Palestinian labor and resources, is among products the Coop should stop selling.

Naomi Brussel  
PSFC Members for BDS  
[psfcbds.wordpress.com](http://psfcbds.wordpress.com)

POINT/  
COUNTERPOINT

## TO THE MEMBERSHIP,

Below are counterarguments to claims in M. Buchwald's previous letter, which channels the writings of far-left Israeli journalist Gideon Levy.

**Levy/Buchwald:** "Give me one example in which there was a genuine readiness to put an end to the occupation".

**Response:** In 2005, Israel unilaterally withdrew all of its soldiers from Gaza and forcibly ejected all Israeli settlers, hoping to see a civil society created there which would pave the way for a similar withdrawal from the West Bank. But Hamas continued its attacks against Israel, requiring a blockade

to prevent them from importing weaponry. Import of necessary consumer goods such as food and medical supplies was permitted under Israeli supervision as well as building materials intended to improve infrastructure but these were subsequently diverted to build tunnels as instruments of war and death and for smuggling arms into Gaza and terrorists into Israel instead of helping to build Palestinian society and infrastructure.

**Levy/Buchwald:** "Israel's Real Purpose in Gaza Operation? To Kill Arabs."

**Response:** Actually it is Hamas rather than Israel that deliberately targets its enemies by aiming rockets at Israeli civilian areas in hopes of killing the despised Jews. And Hamas knowingly promotes casualties among its own citizens by embedding rockets and militants in densely populated areas (confirmed by video footage and pirated out of Gaza at risk of death to the journalists involved\*), including residential areas, schools, hospitals, and Mosques, thereby guaranteeing death and injury of civilians despite Israeli advance notice to evacuate targets prior to bombings. (It's not true that there are no open areas that could have been used to avoid densely populated areas.\*\*\*) Hamas's greatest weapon now is the propaganda value of civilian deaths, especially children.

**Levy/Buchwald:** "The pilots, elite in Israeli society, cannot remain without responsibility, or at least some kind of moral doubts about what they are doing."

**Response:** Hamas leaders, elite in Palestinian society, cannot remain without responsibility for using imported building materials intended for civilian benefit to instead build tunnels intended for use in murdering Jews and to sabotage the chance of peace. It's also doubtful that Hamas leaders, safely ensconced in foreign nations such as Qatar or in underground bunkers of hospitals in Gaza, have any moral qualms about their failure to build life-saving early alert systems and bomb shelters for their civilian population.

**Levy/Buchwald:** "What Does Hamas Really Want? ... There is not one unjust demand among [the conditions for peace]."

**Response:** Among Hamas's conditions for peace are (1) the release of hundreds of previously released Palestinian prisoners (incarcerated again following the recent kidnapping and murder of three Israeli teenagers) so that they may be honored as heroes and resume their violence and (2) the end of the blockade so that Hamas can rebuild their terrorist infrastructure without impediment. This must all be considered in the context of Hamas's long-term goal according to their charter of destroying Israel as a sovereign nation and establishing an Islamic state from the Jordan River to the Mediterranean Sea.

\*[www.youtube.com/watch?v=A\\_fp6mlNSK8](http://www.youtube.com/watch?v=A_fp6mlNSK8)

\*\*[www.jpost.com/Opinion/Op-Ed-Contributors/The-empty-spaces-in-Gaza-370210](http://www.jpost.com/Opinion/Op-Ed-Contributors/The-empty-spaces-in-Gaza-370210)

Sylvia Lowenthal

## A REPLY?

## TO THE EDITOR:

I find it disturbing that in the August 7, 2014 issue of the *Gazette* there appeared both a letter and an article attacking one specific member, Naomi Brussel. Both the article and letter question her ability to function on the Diversity and Equality Committee because of her activism in BDS. I am referring to the Member Submission on page 10, "Making the Coop Safe for Hypocrisy," by Ruth Bolletino, PhD, and the Letter on page 15, "Perceptions of Bias" by Sylvia Lowenthal.

I would like to bring your attention to the Letters Policy, which states that whenever substantive accusations against specific individuals are made, the person is allowed to provide a response, which is to be published simultaneously. I saw no such response from Ms. Brussel.

I am not one to write constant letters nor have constant arguments about the Middle East and/or the merits of BDS, but I am really getting tired of hearing the same rhetoric from the same people over and over again.

So far I have chosen to ignore this, but I find it hard to ignore what seems to be a concerted effort to silence and limit the participation of any member who advocates for the human rights of Palestinians. I am tired of the charge of anti-Semitism being thrown at anyone who criticizes the government of Israel. Ms. Lowenthal, in her letter, refers to Jews and Israel interchangeably, and characterizes all supporters of Israel as Jewish, implying that anyone critical of Israel is against Jews. Neither of these statements is factual or logical. Zionism is a political ideology, and disagreement with an ideology is not hate speech.

On the other hand, over the past couple of years I have read very bigoted statements about Arabs and Arab nationalities more than once on these very pages made by anti-BDS people. Perhaps I should have written to complain sooner, but this kind of discriminatory characterization is so prevalent and commonplace in the United States today that it is exhausting to address it in every instance.

In closing I would like to say, I do agree with Ms. Bolletino, (PhD.), we do need to "stop hate at PSFC." We can start by addressing the prejudice and intolerance within ourselves.

In Cooperation,  
Amina Ali, (M.A.—that's as far as I got, hope it's acceptable)

[Editor's Note: It was an editorial lapse not to reach out to Naomi Brussel to respond in the August 7 issue. We apologize, and will try our best to make sure the policy on this is adhered to in the future.]

## CONDEMN HAMAZ

## TO THE EDITOR:

In light of the latest development in the Middle East, it became clear that Hamaz is doing everything possible to destroy Israel and indeed to destroy the people of Gaza. Hamaz sent around 3,000 missiles into Israel. The main goal for Hamaz is to force Israel to defend herself. Hamaz political leaders moved to Qatar and are residing in a five star hotel. The Hamaz military wing dug

CONTINUED ON PAGE 14

## LETTERS TO THE EDITOR

CONTINUED FROM PAGE 13

## BDS TOPICS:

dozens of tunnels using the cement and the money they were given for humanitarian purposes. The leaders of the military wing created the entire underground city where they stay in comfort while the civilians were forced to stay in the areas where the military operations to destroy the tunnels were conducted by the Israelis. Israelis were fighting for their lives. The tunnels were coming from the mosques, hospitals, private schools and going into Israel, next to kibbutzim, schools and playgrounds.

Hamaz was using the densely populated apartment buildings, hotels and UN schools to set up the rocket launchers to send rockets into Israel. While the people in Gaza live in poverty, leaders of Hamaz live in luxury. They spent millions and millions of dollars to dig the tunnels and to arm themselves. The world must condemn Hamaz for the loss of more than 1,000 lives as a result of its criminal activities. People all over the world should condemn Hamaz and indeed those agencies of the United Nations that allowed to go unnoticed the digging of tunnels, to allow the storing of rockets in UN schools, and the use of schools as cover for rocket launcher installations.

Fanya Vasilevsky

## 'HATE' AT THE COOP

## TO THE EDITOR,

It is with deep sadness that I read letters in these pages referring to me and others who are in support of basic human rights and in

this case, Palestinian rights, as hatemongers. We who have spoken out in support of BDS are strongly committed Coop members. Many of us are Jews whose families have been similarly traumatized by history. Some of us have family in Israel. Some of us are lesbian and gay. We meet in each others' homes and have potlucks. We receive no funding. We have been scorned and have been verbally and even physically attacked by our fellow Coop members. We have been called names in these pages and have had vile accusations hurled against us. I know that those of you who have done so are frightened and feel victimized. I know what that feels like, and I know how tempting it is to revert to anger and hatred, to think (wrongly) that you are being persecuted unjustly. Believe me, I've been there! I struggle to regain equanimity and to refrain from reverting to those responses when I read your letters! Please remember that there are also frightened Palestinian and Arab members, not just Jewish ones, at the Coop, and please stop calling me and my dear allies "Haters." I prefer "Human Rights Activist."

Carol Wald

## BDS AND TERRORISTS

## TO THE EDITOR:

The notion that BDS represents the Palestinian people and their interests is a sham. By supporting Hamas and the PLO, BDS aligns itself with terrorists and terrorist support. The PLO pays martyr fees to the families of suicide bombers and names streets after them. Hamas

embeds itself within residential areas and from there launches offensive missiles into Israel. This guarantees that striking the launch point kills innocents. Hamas transports munitions in ambulances, stores weapons and explosives in mosques, schools and hospitals and even launches missiles from those locations or near those points so that any notion of protecting the public is not a consideration.

In fact, Hamas leadership clearly thinks that as the body count rises in Gaza, international sympathy will swing its way. Hamas is an entity that embodies a form of political Islam so extreme that in an article in the NYT on July 31, 2014—Jordan, Saudi Arabia and The United Arab Emirates view Hamas as "worse than Israel."

BDS does not support the Palestinian people it uses them as callously as the PLO and Hamas. It makes a mockery of decency and clouds the discussion with pseudo liberal palaver and politically correct deceit.

To allow a BDS Issues column in the *Linewaiters' Gazette* is to offer aid and comfort to terrorists and terrorist leadership. If the *Gazette* is going to offer this splinter group its own spot, than any other group should be afforded the same privilege. By continuing to run such a column the Coop appears to support BDS even though the matter was settled in a huge meeting where the BDS and its proposal to politicize the Coop failed.

If the editorial board of the *Gazette* cannot embrace a format that serves the prime function of the Coop, then the pro BDS members of the board should resign. To con-

tinue to harangue membership with duplicitous propaganda serves only the myopic needs of the BDS and ignores the fundamental purpose of a Food Coop newspaper.

Rodger Parsons

[Editor's Note: We regard the letters section of the *Gazette* as a free speech platform. The editors are members doing our workslots. Our role is to ensure that letter and member submissions adhere to the Fairness, Anonymity and Respect policies published each week in the letters section of the *Gazette*, and are within the word limits. Every letter that is within these guidelines is published. We created the BDS section in response to members' requests, to help members who wish to read letters related to that topic, to find them easily, and those who do not, to see clearly where they are.]

## CHANGE THE CONVERSATION

## DEAR MEMBERSHIP:

I think we can all sigh in relief again that clearer heads plucked out the birthing weeds of the boycott-Israel proposal those years ago.

On July 28, somebody spraypainted a Nazi swastika to the walls of a South Florida synagogue. As disturbing as that is, something far more sinister is at play. The graffiti included the word "Hamas" above it.

Well, some people wanted Americans talking about Israel/Palestine, and now they are; except they're not. That spraypaint is aimed at a people and a religion, not a nation-state. It neatly proves how the arc of hating Israel is bent towards hatred of Jews.

It's been obvious all along for anyone who paid attention, but the open secret is no longer secret.

A relentless refrain of "Israel is wrong every day in every way" is responsible for coaxing this monster from the scummiest corners of our culture, deee-lighted to at last march openly, camouflaged by the banner of (wink-wink) anti-Zionism. Was his appearance on our streets not predicted? Or is he just a small price to pay?

Point of information: don't believe for a second that one's "post-Zionist", "anti-Zionist", and "anti-colonialist" credentials will ever make a difference. In the end, this monster mumbles under his breath, "A Jew is a Jew". Count on it.

I submit this as yet another example of why boycotts should be legally set to pass an 80% approval vote by the General Meeting. Had the default bare majority of 51% been enacted, our cooperative grocery store and the First Principle of Cooperative Identity, "Co-operatives are voluntary organisations, open to all persons able to use their services and willing to accept the responsibilities of membership, without gender, social, racial, political or religious discrimination," would today be stained by the very same hate speech, encouraged by the automated lies and racist demonization of a Jewish country who enrages bigots by defending herself.

Thank God the boycott proposal ended before it began. Otherwise the world would look at our cooperative very differently today.

It's time to change the conversation. Finally.

Jesse Rosenfeld

## Puzzle Answer

ARGO  
CRASH  
ROCKY  
PLATOON  
CHICAGO  
TITANIC  
UNFORGIVEN  
Theme:  
ACADEMY WINNERS

What Is That? How Do I Use It?

## Ask Me Questions About Coop Foods

Every Monday, 12 to 2:45 p.m.

You can join in any time during a  
question-and-answer session  
on the shopping floor.

Look for four leaders in produce aisle.



ILLUSTRATION BY ETHAN PETTIT

## CLASSIFIEDS

## BED &amp; BREAKFAST

HOUSE ON 3RD ST AT 6TH AVE Parlor floor thru sleeps 4 in privacy, AC, wifi, kitchenette, deck, 12' ceilings, \$170 a night for 2. Visit our site at [houseon3st.com](http://houseon3st.com) or call us, 718-788-7171. Enjoy modern comfort in true Park Slope style. Grandparents our specialty! We want to be your hosts in the Slope.

## CLASSES

2's PLAYGROUP Fall 2014-Spring 2015. Two days a week program Tue/Thu 9:00-11:30 a.m. Shifting to three day in the spring. Bankstreet trained director/head teacher. Based on open-ended, discovery, arts curriculum, rooted in developmental theory. Play. Art. Music. Movement. Exploration. Growth and learning! North Slope location. 917-856-0058.

## HOUSING AVAILABLE

BUNGALOW FOR SALE @ Lake Huntington Summer Community, nr Bethel Art Center, 3 1/2 hrs from NYC. 3 rooms, kitchen, 2 bedrooms + sleep loft. Suitable indiv, couple, 1-child family. Retro look, new appliances. Beautifully landscaped, pool, lake. Tennis, basketball, volleyball courts. Laundries, child's play areas, activities for all. 917-621-7101.

## MERCHANDISE

Piano. This excellent Baldwin Spinnet can be delivered to your home for \$1000. Ideal for a beginner/intermediate player or a small apartment. Call Ben Watts 646-764-0865, come and try it out, email [benandtina@verizon.net](mailto:benandtina@verizon.net) for pictures.

## MERCHANDISE -NONCOMMERCIAL

FOR SALE: Women's beautiful green suede Susan Bennis Warren Edwards cowboy-style boots, size 10, \$100 or BO; tall, red Hunter rubber boots, new, size 9, \$50; Merrell shoes, gray, new, size 8 1/2, \$25. Call 718-786-1598.

## SERVICES AVAILABLE

TROUBLE WITH MONEY & DEBT? Debtors Anonymous--free and confidential meetings in Brooklyn: Monday, Tuesday, Wednesday, Saturday. Times & places call 212-969-8111 or go to [www.danyc.info](http://www.danyc.info).

ATTORNEY—Personal Injury Emphasis—36 years experience in all aspects of injury law. Individual attention provided for entire case. Free phone or office consultations. Prompt, courteous communications. 24-year Park Slope Food Coop member; Park Slope resident; downtown Brooklyn office. Tom Guccione, 718-596-4184, also at [www.tguccionelaw.com](http://www.tguccionelaw.com).

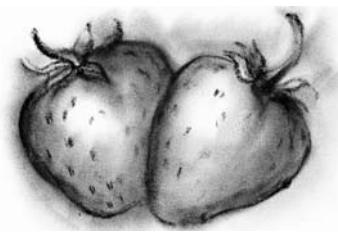
MADISON AVENUE HAIRCUTTER is right around the corner from the food Co-op, so if you would like a really good haircut at a decent price, please call Maggie at 718-783-2154, I charge \$60.00.

EXPRESS MOVES. One flat price for the entire move! No deceptive hourly estimates! Careful, experienced mover. Everything quilt padded. No extra charge for wardrobes and packing tape. Specialist in walkups. Thousands of satisfied customers. Great Coop references. 718-670-7071.

## VACATION RENTALS

3-SEASON BUNGALOWS Studio, 1- and 2-BR houses in historic bungalow community near Peekskill and the Hudson River, 1 hour NYC. Pool, tennis, organic community garden, social hall w/internet, social activities. \$25k-\$87k. [www.reynoldshills.org/bungalow-shop](http://www.reynoldshills.org/bungalow-shop). Contact Mel: 347-307-4642, [melgarfinkel@yahoo.com](mailto:melgarfinkel@yahoo.com), or 347-715-3735.

Rent pvt bed & bath in PASSIVE SOLAR farmhouse. Organic food & bedding provided by farmer. Hypoallergenic furnishings. PERMACULTURE gardens. Secluded ravine w/16' WATERFALL & picnic site. Woods, beaver pond also on farm. Sharon Springs near Cooperstown. No pets. \$400/wk or \$1200/mo plus food. 518-860-8602.



## To Submit Classified or Display Ads:

Ads may be placed on behalf of Coop members only. Classified ads are prepaid at \$15 per insertion, display ads at \$30. (Classified ads in the "Merchandise-Non-commercial" category are free.) All ads must be written on a submission form. Classified ads may be up to 315 characters and spaces. Display ads must be camera-ready and business card size (2" x 3.5" horizontal).

Submission forms are available in a wallpocket near the elevator in the entrance lobby.

## BROWNSTONE TECHNOLOGY SERVICES

"tech support for people"

Mac, Windows, phones, tablets and more.....

[www.tech11215.com](http://www.tech11215.com)

718-930-2286 • [info@tech11215.com](mailto:info@tech11215.com)

JITTERBUG JAM  
Swing Dance Night

Dance Lessons with ARTURO PEREZ

FLYING HOME live 30s & 40s Swing Music

Friday, Sep 5th, 8-11pm  
BSEC - 53 Prospect Park West

[www.brooklynswingdance.com](http://www.brooklynswingdance.com)

**BROOKLYN FREE SCHOOL** Open Houses:  
Oct 22, 6pm  
Nov 19, 6pm

To learn more about our unique Pre-K thru High School program, visit [brooklynfreeschool.org](http://brooklynfreeschool.org)

## COMMUNITY CALENDAR

Community calendar listings are free.

Please submit your event listing in 50 words or less to [GazetteSubmissions@psfc.coop](mailto:GazetteSubmissions@psfc.coop).

Submission deadlines are the same as for classified ads. Please refer to the Coop Calendar in the center of this issue.

## FRI, SEP 5

7:00 p.m. CLIMATE CHAOS OR CLIMATE JUSTICE? Panelists Sean Sweeney, Michael Klare, Janet Redman, and JJ Johnson discuss the social and political forces that prevent action on global warming and what we can do to create real change. Memorial Presbyterian Church, 186 St. John's Pl. at Seventh Ave., Bklyn. Info: 718.624.5921 or [climateaction@brooklyn-peace.org](mailto:climateaction@brooklyn-peace.org).

8-11 p.m. JITTERBUG JAM! First Friday Swing Dance in Park Slope with Flying Home and Arturo Perez. Dance lessons with Arturo Perez followed by live 30s and 40s swing music from Flying Home with guest singer Cynthia

Hopkins! BSEC, 53 Prospect Park West. More Info: [www.brooklyn-swingdance.com](http://www.brooklyn-swingdance.com).

## SAT, SEP 20

12 p.m. PermaFest 3 Theme: "Building Resilient Communities" Skill sharing, services, a barter market, a gift circle, a talk about soil nutrition & climate change, live music and a picnic dinner at 6pm. This year's event will be held in conjunction with the Climate Change Convergence. Old Stone House, Washington Park, 336 Third St., Bklyn.

The Park Slope Food Coop is looking for a  
Font Server Administrator

who will administer Universal Type Server 4 for Macintosh. This is a workslot, not a paid position. We have seven workstations using UTS, and we are also using Adobe CC and Quark 8. Currently workstations are using OS 10.7.5, but we have plans to update shortly to OS 10.8. Updating, maintenance and testing of UTS to work with current versions of OS plus

Adobe CC and Quark 8 are required. The Coop currently uses the UTS extensis font server to produce a bi-weekly newsletter and internal documents. Hours are as needed, for FTOP credit.

Contact: [ann\\_herpel@psfc.coop](mailto:ann_herpel@psfc.coop).



Classified advertising in the *Linewaiters' Gazette* is available only to Coop members. Publication does not imply endorsement by the Coop.

Read the *Gazette* while you're standing on line OR online at [www.foodcoop.com](http://www.foodcoop.com)



EXCITING WORKSLOT OPPORTUNITIES

**Bathroom Cleaning**  
**Tuesday, 12 to 2 p.m.**

Work with a partner to deep clean the Coop's bathrooms. Tasks include scrubbing floor tiles, cleaning toilets, mopping floors and stocking the bathrooms. You will work with only natural cleaning products. This job is perfect for members who like to clean and are conscientious about doing a thorough job.

**Entrance Desk**  
**Friday, 5:45 to 8 a.m.**

Supervised by Membership Coordinators, you will be staffing the Entrance desk in hours of the weekday before the Coop is open to shoppers. Primarily you will be checking in working members, informing them of their member and household status, and handing out entrance desk slips to members who need them. Entrance workers provide an essential member service and must be welcoming, polite, able to read and interpret information on the entrance desk screen, able to clearly convey information about member status directly to members. Entrance workers also provide a key security function, and must remain alert throughout the shift, which may have slow periods. Therefore reading, writing, talking on the phone, texting, etc. is not allowed. Punctuality and good attendance will be essential, as you will be the only Entrance worker scheduled at this time of day. Paid Membership Coordinators will be present to train you on your first (and second) shift, and then to support you and answer questions going forward.

**Office Set-up**  
**Monday-Thursday, 6 to 8:30 a.m.**

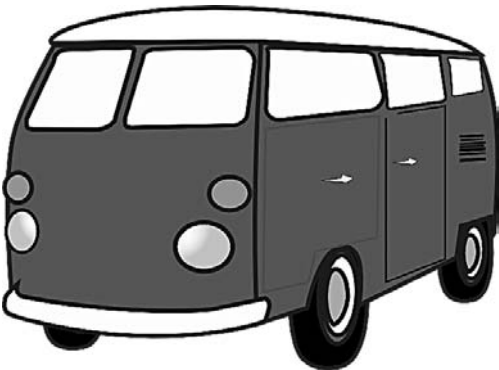
Need an early riser with lots of energy to do a variety of physical tasks including: setting up tables and chairs, buying food and supplies, labeling and putting away food and supplies, recycling, washing dishes and making coffee. Sound like your dream come true? This job might be for you. Please speak to Adriana or Cynthia in the Membership Office for more information.

**Compost Haulers**

We need members with a van or truck to haul the compost from the Coop to various community gardens. It is a regular work slot, every four weeks. The time of day is flexible. If you are a member with a truck and not afraid to haul buckets of compost, please consider this very important work slot. For more info talk to Annette Laskaris in the Membership Office or e-mail your interest to [annette\\_laskaris@psfc.coop](mailto:annette_laskaris@psfc.coop).

**General Meeting Set-Up**  
**Tuesday, 5:30 p.m.**

Adaptable, physically energetic, team workers with excellent attendance needed to help set up and break down the space where the General Meeting is held. Contact Adriana Becerra, Membership Coordinator, [adriana\\_becerra@psfc.coop](mailto:adriana_becerra@psfc.coop).



**Van/Truck Driver for GM Delivery/Pick-Up**  
**Last Tuesday night of the month**

Member with a van or truck needed to pick up and load the team of workers and gear from the Coop at 5:30 p.m. and drop them off at the local General Meeting venue (currently M.S. 51) and help unload. Then, be on call to return to venue for pick-up and loading of workers and gear between hours of 8:45-10 p.m., and drive back to Coop. You must be dependable, with good attendance. Contact Adriana Becerra, Membership Coordinator, [adriana\\_becerra@psfc.coop](mailto:adriana_becerra@psfc.coop).

BROOKLYN FOOD COALITION

**On Sunday, September 21, world leaders are coming to New York City for a UN summit on the climate crisis.**

**UN Secretary General Ban Ki-moon is urging governments to support an ambitious global agreement to dramatically reduce global warming pollution.**



**With our future on the line and the whole world watching, we'll take a stand to bend the course of history. We'll take to the streets to demand a world with an economy that works for people and the planet; a world safe from the ravages of climate change; a world with good jobs, clean air and water, and healthy communities.**

**Join the Brooklyn Food Coalition Food and Agriculture contingent: [climatechangeBFC@gmail.com](mailto:climatechangeBFC@gmail.com).**



ILLUSTRATION BY ETHAN PETTIT

THANK YOU!

Thank you to the following members for referring friends who joined the Coop in the last four weeks.

Lenny Adler	Gregg Bromberg	Anita Fee	Jonathan Hoffman	Julia Malta-Weingard	Lydia J. Robertson	Aleza Summit
Jen Albano	Greyson Brooks	Ellen Freudenheim	Sarah Hovde	Roxi Marsen	Justin Ruben	Henriette Svendsen
Khaleed Alston	Lauren Calhoun	Marne Friedman	Karen Joseph	Thomas McGinley	Allyson Rudolph	Paul Takeuchi
Andre Azevedo	Kate Carmody	Erin Gallagher	Laura Joviala	Erin Mendell	Diane Sammer	Mary Tchamkina
Asha Banker	Roohi Choudhry	Mike Gallagher	Ginger Jung	Deborah Micallef	Scott Sasso	Maria Torre
David Barker	Emma Conroy	Ana Gallo	John Kamea	Gina Mikan	Jessica Scheer	Emily Tsaconas
Robert Baron	Barbara Cowen	Asher Gaylord-Ross	Dara Kammerman	Rebecca Minnich	David Schlachter	Dana Turner
Mike Barry	Kate Daloz	Rosie Glicklich	Nora Keane	Damoon Nikaiyn	Judy Schneier	Resa Tylim
Stephanie Bejar	Caleb Dawson	Kathleen Goodwin	Paula Victoria Kupfer	Amy Pete	Emily Sharrock	Aida Verdes
Michael Belcher	JoAnna Dawson	Laura Harrison	Brian Larossa	James Ragusa	Acacia Shields	Kathy Viskup
Sarah Benesch	Stephen Dobkin	Geralyn Harry	Hindy Leitner	Pilar Ramos	Joseph C. Shipley	Stephanie Wan
Cheryl Benn	Marco Donati	Sarah Hesson	Jacob Lazar	Roni Ramos	Nicole Smith	Kara Wayman
Bitia	Edward Dutton	Hallie Hodenfield	Autumn Leonard	Allison Rex	Steven Sockey	Mark Weston
Diane Brady	Liz Eisenberg	Monique Hoefflinger	Shia Levitt	Marlene Reynolds	Lise Soskolne	Daniel Wiener
Brandi	Perri Erlitz	Deborah Hodge	Trevor MacDermid	Camille Riviére	Letitia Spangler	Katie Yeskel
Jennifer Breen	Melissa Esmundo	Deb Hoffman	Mercedes Madanire	Zoe Roben	Ewelina Stepnicka	Catherine Zhou

